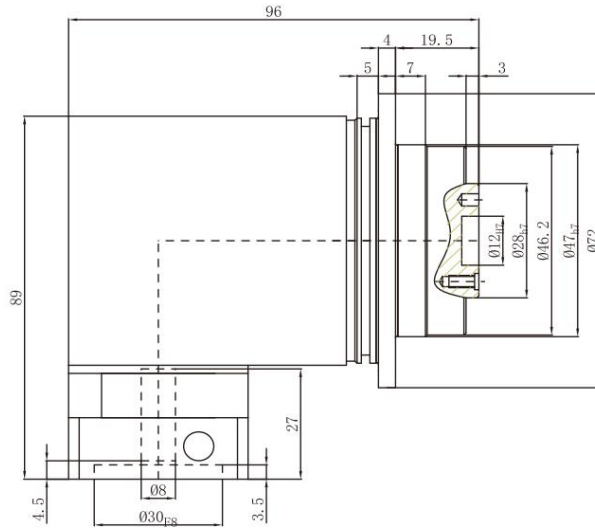
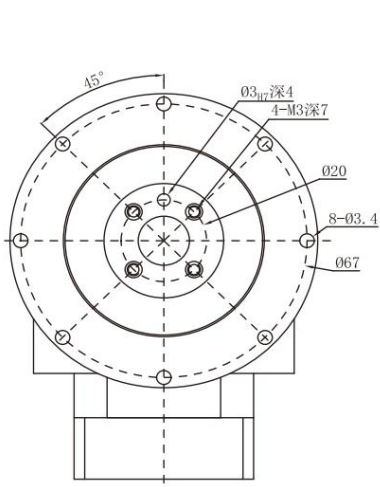


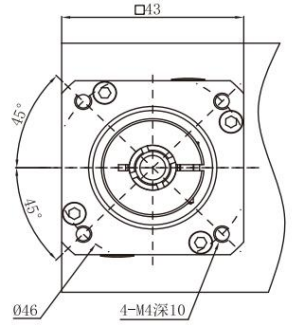
外形尺寸图表 / OUTLINE DIMENSION SHEET

PGFR 047-L1

输出端/OUTPUT

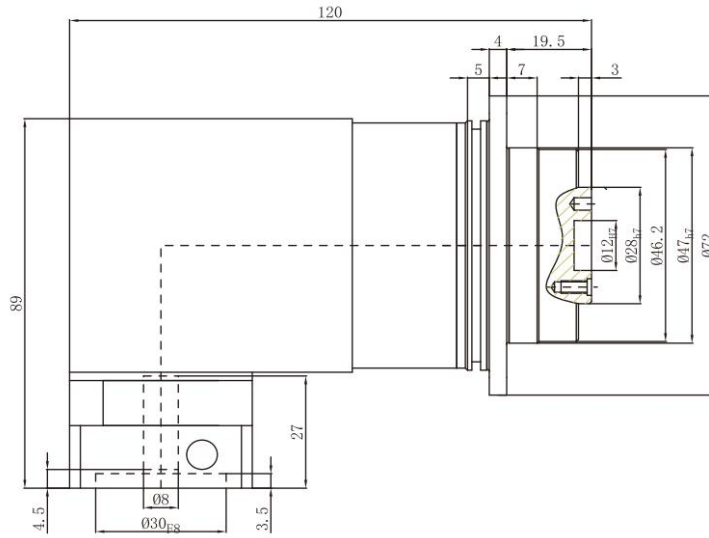
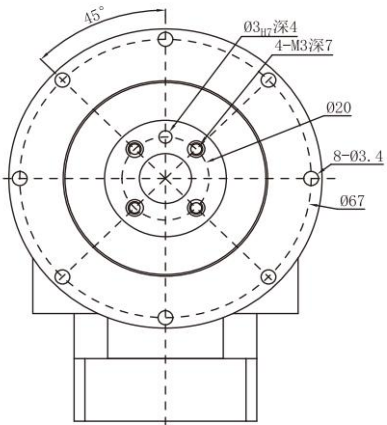


输入端/ INPUT

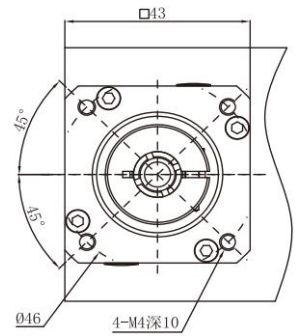


PGFR 047-L2

输出端/OUTPUT

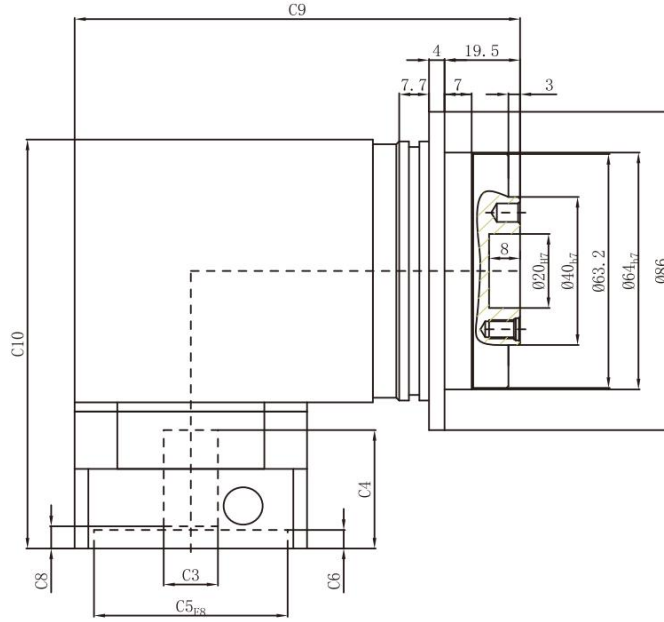
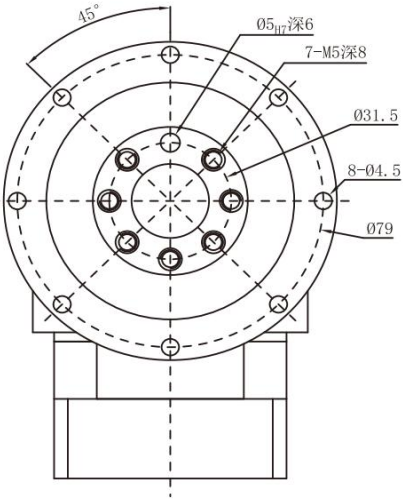


输入端/ INPUT

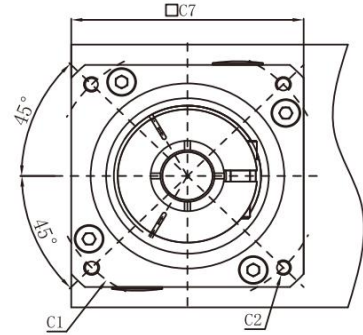


PGFR 064-L1

输出端/OUTPUT

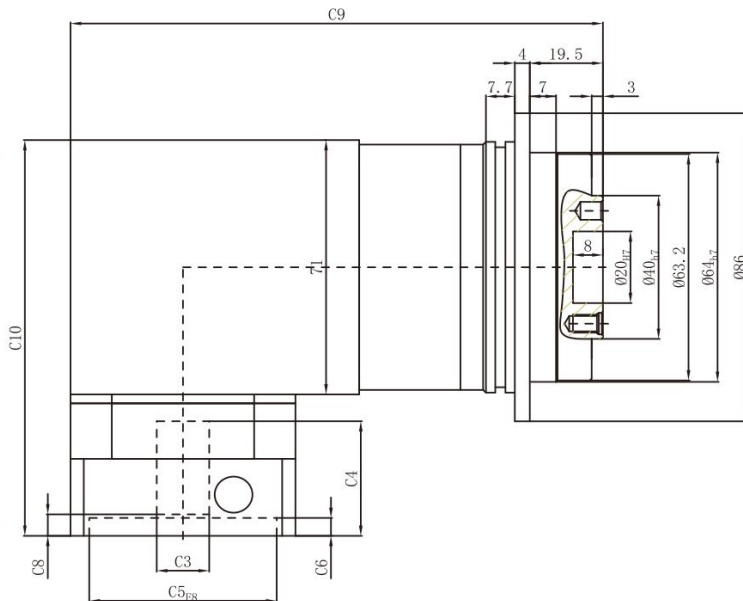
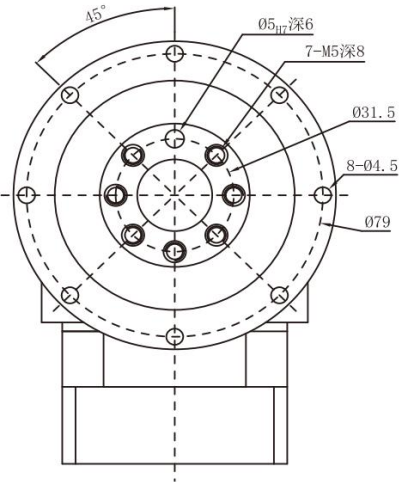


输入端/ INPUT

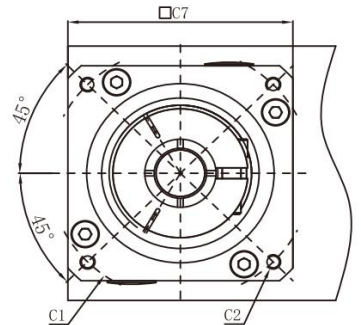


PGFR 064-L2

输出端/OUTPUT



输入端/ INPUT



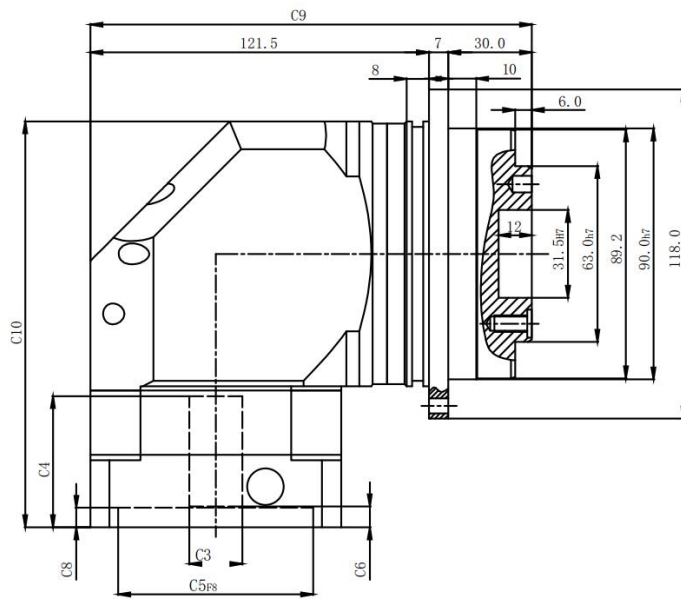
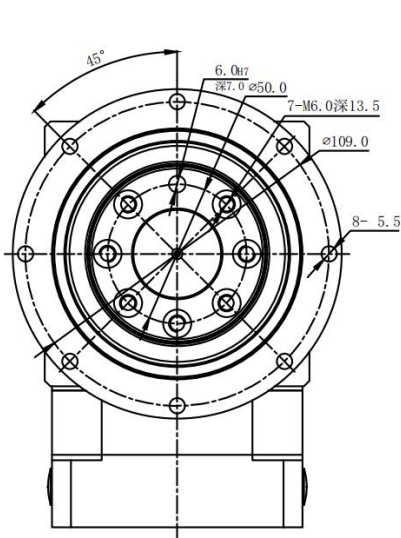
尺寸	C1	C2	C3	C4	C5	C6	C7	C8	C9	C10
PGFR064-L1	φ 46	4-M4x12,4-M5x12	≤ φ 8	37.5	φ 30	10.5	60	11.5	115	116
	φ 66.7	4-M4x12	≤ φ 8	32	φ 38.1	5	60	6	115	110.5
	φ 70	4-M4x10,4-M5x12	≤ φ 14	32	φ 50	5	60	6	115	110.5
	φ 75	4-M4x12,4-M5x12	≤ φ 14	32	φ 60	5	66	6	118	110.5
PGFR064-L2	φ 46	4-M4x12,4-M5x12	≤ φ 8	37.5	φ 30	10.5	60	11.5	142	116
	φ 66.7	4-M4x12	≤ φ 8	32	φ 38.1	5	60	6	142	110.5
	φ 70	4-M4x10,4-M5x12	≤ φ 14	32	φ 50	5	60	6	142	110.5
	φ 75	4-M4x12,4-M5x12	≤ φ 14	32	φ 60	5	66	6	145	110.5

* C1~C10是公制标准马达连接板之尺寸,可根据客户要求单独定做。

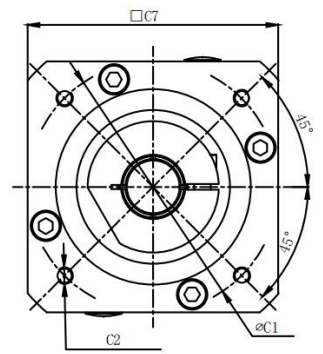
* C1~C10are motor (metric standard) specific dimensions, which could be customised.

PGFR090-L1

输出端/OUTPUT

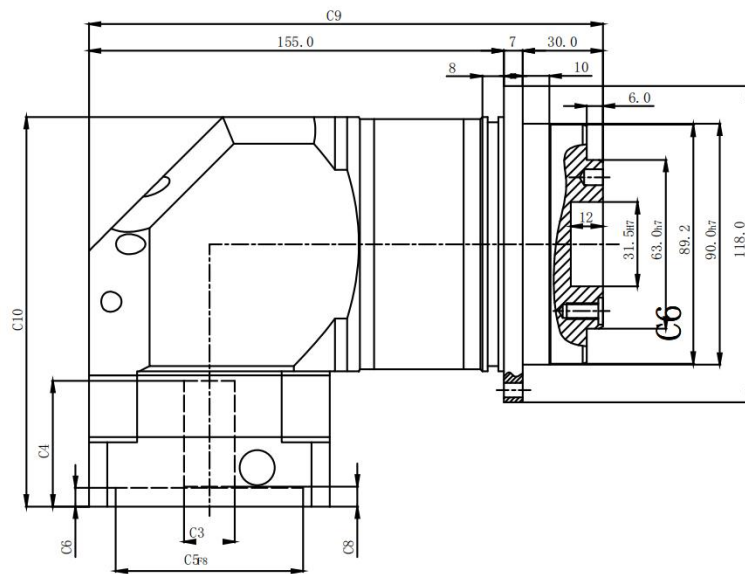
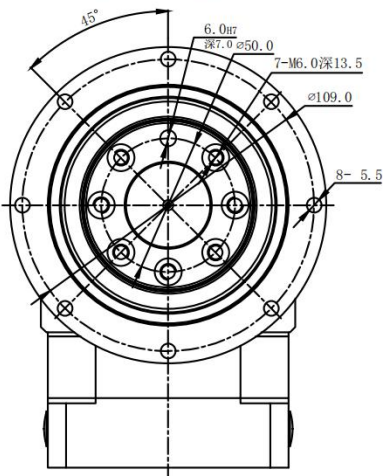


输入端/INPUT

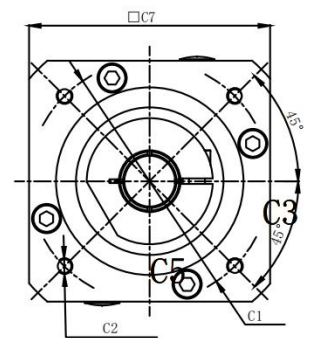


PGFR090-L2

输出端/OUTPUT



输入端/INPUT



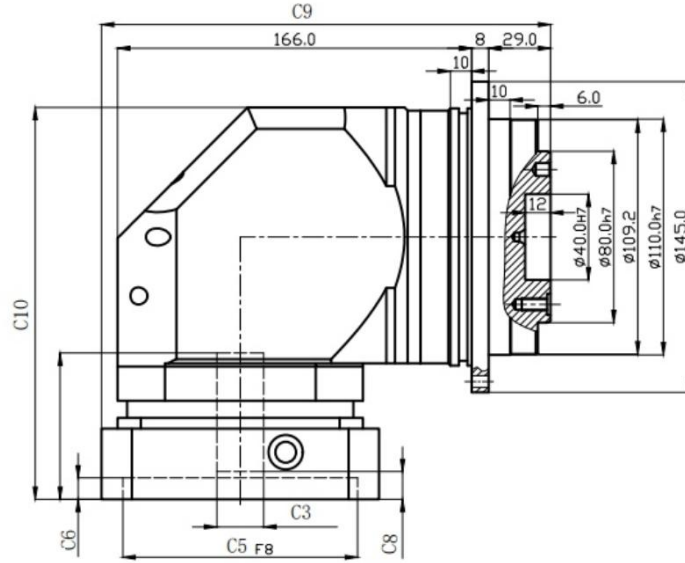
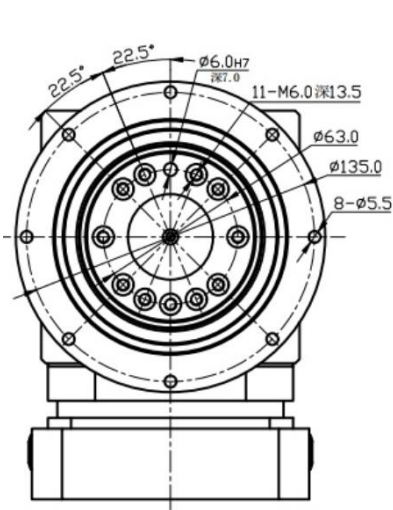
尺寸	C1	C2	C3	C4	C5	C6	C7	C8	C9	C10
PGFR090-L1	φ 70	4-M4x10,4-M5x12	≤ φ 14	47	φ 50	4	90	6.5	158.5	145.5
	φ 75	4-M4x12,4-M5x12	≤ φ 14	47	φ 60	5.5	90	6.5	158.5	145.5
	φ 90	4-M5x15,4-M6x15	≤ φ 19	47	φ 70	7	90	7.5	158.5	145.5
	φ 98.4	4-M5x15,4-M6x15	≤ φ 14	47.5	φ 73	7	90	7.5	158.5	145.5
	φ 100	4-M6x15	≤ φ 19	47.5	φ 80	7	90	12.5	158.5	145.5
	φ 115	4-M8x20	≤ φ 24	59	φ 95	10	100	12.5	163.5	157.5
	φ 130	4-M8x20	≤ φ 24	59	φ 95	10	115	12.5	171	157.5
	φ 145	4-M8x20	≤ φ 24	59	φ 110	10	130	12.5	178.5	157.5
PGFR090-L2	φ 70	4-M4x10,4-M5x12	≤ φ 14	32	φ 50	5	60	6	153.5	122.5
	φ 75	4-M4x12,4-M5x12	≤ φ 14	32	φ 60	5	66	6	156.5	122.5
	φ 90	4-M5x15,4-M6x15	≤ φ 19	47	φ 70	7	90	7.5	192	145.5
	φ 98.4	4-M5x15,4-M6x15	≤ φ 14	47.5	φ 73	7	90	7.5	192	145.5
	φ 100	4-M6x15	≤ φ 19	47.5	φ 80	7	90	12.5	192	145.5
	φ 115	4-M8x20	≤ φ 24	59	φ 95	10	100	12.5	197	157.5
	φ 130	4-M8x20	≤ φ 24	59	φ 95	10	115	12.5	204.5	157.5
	φ 145	4-M8x20	≤ φ 24	59	φ 110	10	130	12.5	212	157.5
	φ 145	4-M8x20	≤ φ 24	68	φ 110	10	130	21.5	212	166.5

* C1~C10是公制标准马达连接板之尺寸,可根据客户要求单独定做。

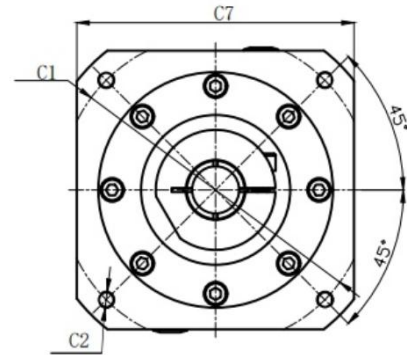
* C1~C10are motor (metric standard) specific dimensions, which could be customised.

PGFR 110-L1

输出端/OUTPUT

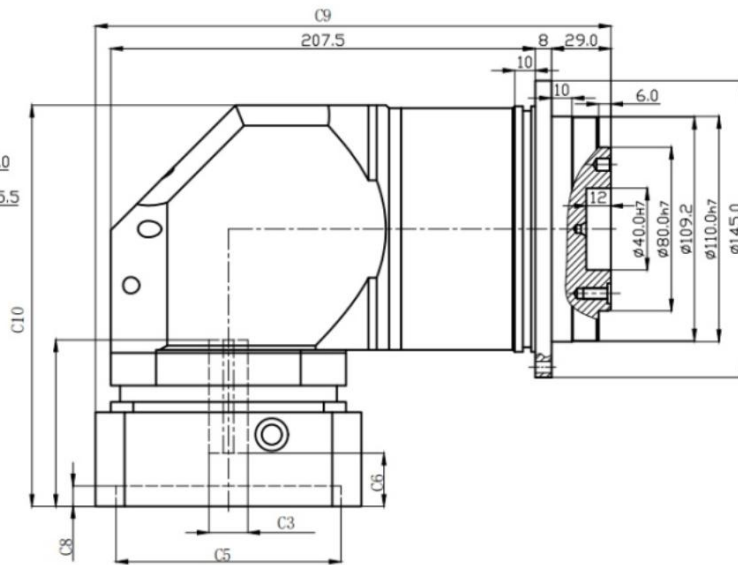
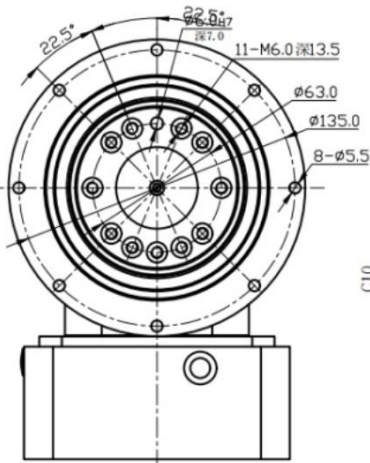


输入端/ INPUT

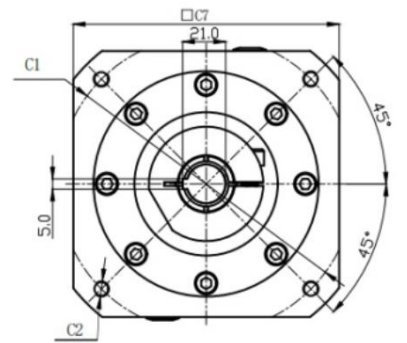


PGFR 110-L2

输出端/OUTPUT



输入端/ INPUT



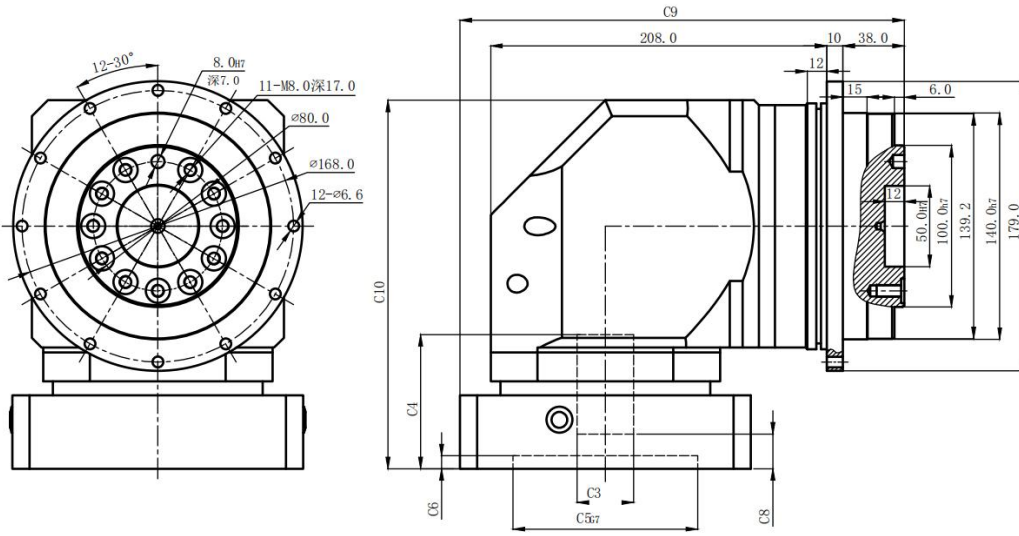
尺寸	C1	C2	C3	C4	C5	C6	C7	C8	C9	C10
PGFR110-L1	$\phi 90$	4-M5x15,4-M6x15	$\leq \phi 19$	62	$\phi 70$	7	115	12	200	183
	$\phi 100$	4-M6x15	$\leq \phi 19$	62	$\phi 80$	7	115	12	200	183
	$\phi 115$	4-M8x20	$\leq \phi 24$	62	$\phi 95$	10	115	13	200	183
	$\phi 145$	4-M8x20	$\leq \phi 24$	62	$\phi 110$	10	130	13	207.5	183
	$\phi 145$	4-M8x20	$\leq \phi 24$	71	$\phi 110$	10	130	13	207.5	192
PGFR110-L2	$\phi 90$	4-M5x15,4-M6x15	$\leq \phi 19$	47	$\phi 70$	7	90	7.5	206.5	158
	$\phi 100$	4-M6x15	$\leq \phi 19$	47	$\phi 80$	7	90	7.5	206.5	158
	$\phi 115$	4-M8x20	$\leq \phi 24$	59	$\phi 95$	10	115	12.5	219	170
	$\phi 145$	4-M8x20	$\leq \phi 24$	59	$\phi 110$	10	130	12.5	226.5	170
	$\phi 145$	4-M8x20	$\leq \phi 24$	68	$\phi 110$	10	130	21.5	226.5	179

* C1~C10是公制标准马达连接板之尺寸,可根据客户要求单独定做。

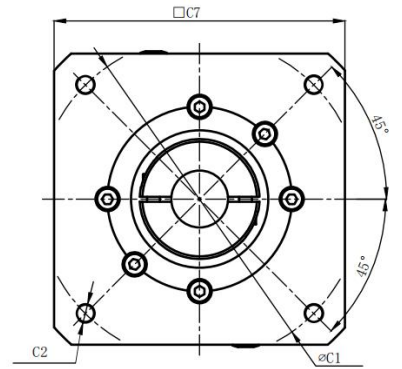
* C1~C10are motor (metric standard) specific dimensions, which could be customised.

PGFR 140-L1

输出端/OUTPUT

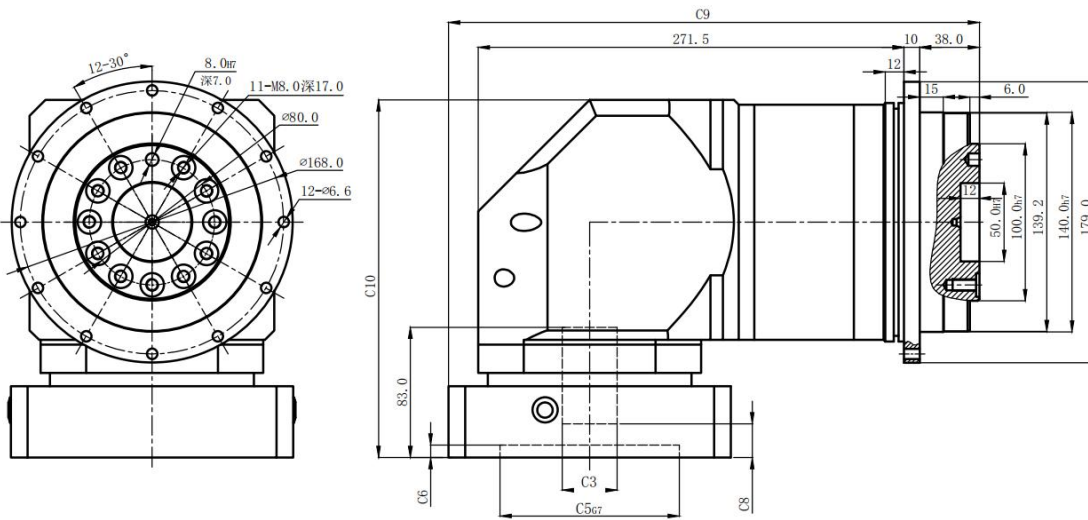


输入端/ INPUT

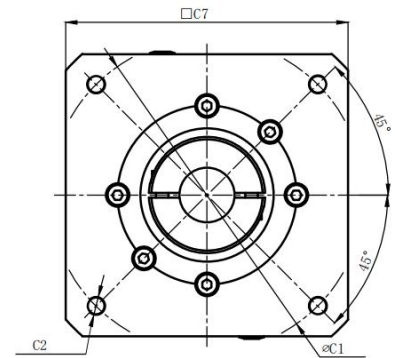


PGFR 140-L2

输出端/OUTPUT



输入端/ INPUT



尺寸	C1	C2	C3	C4	C5	C6	C7	C8	C9	C10
PGFR140-L1	φ 145	4-M8x20	≤ φ 28	81	φ 110	10	142	19.5	256	226
	φ 165	4-M10x25, 4-M12x35	≤ φ 32	81	φ 130	10	142	19.5	256	226
	φ 200	4-M12x35	≤ φ 42	83	φ 114.3	8	180	21.5	275	228
PGFR140-L2	φ 200	4-M12x35	≤ φ 42	115	φ 114.3	8	180	53.5	275	260
	φ 145	4-M8x25	≤ φ 24	62	φ 110	10	142	13	271.5	198.5
	φ 165	4-M10x30	≤ φ 28	62	φ 130	10	142	13	271.5	198.5

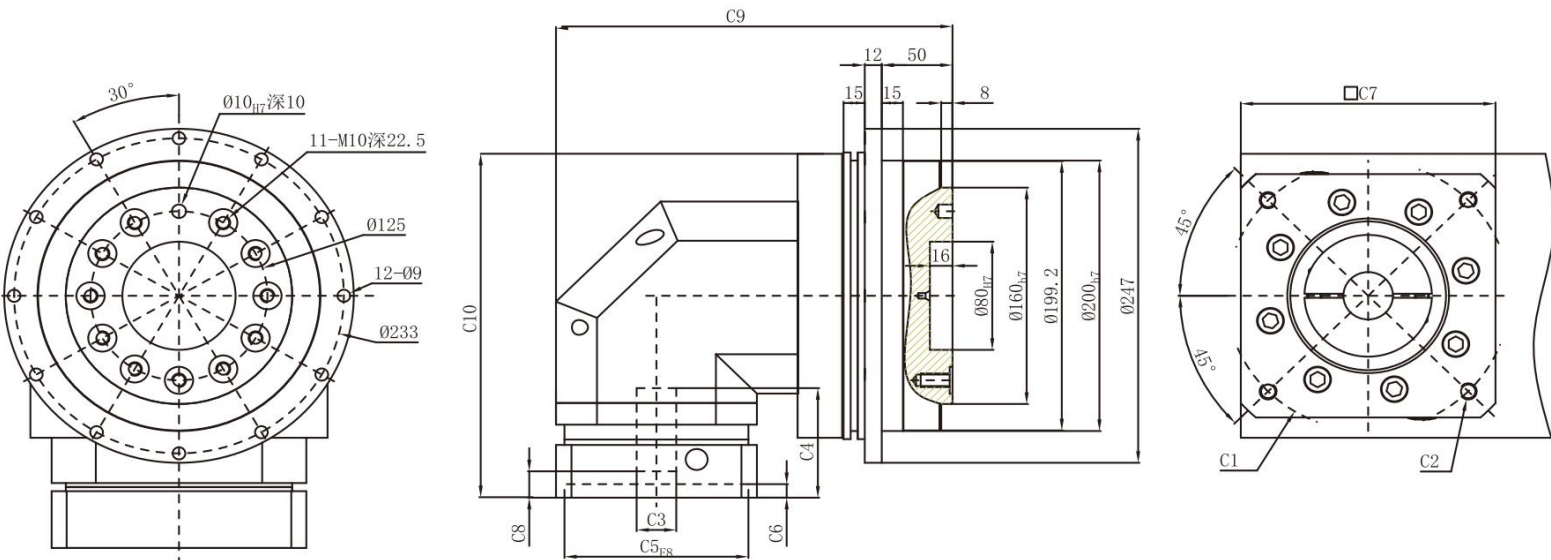
* C1~C10是公制标准马达连接板之尺寸,可根据客户要求单独定做。

* C1~C10are motor (metric standard) specific dimensions, which could be customised.

PGFR 200-L1

输出端/OUTPUT

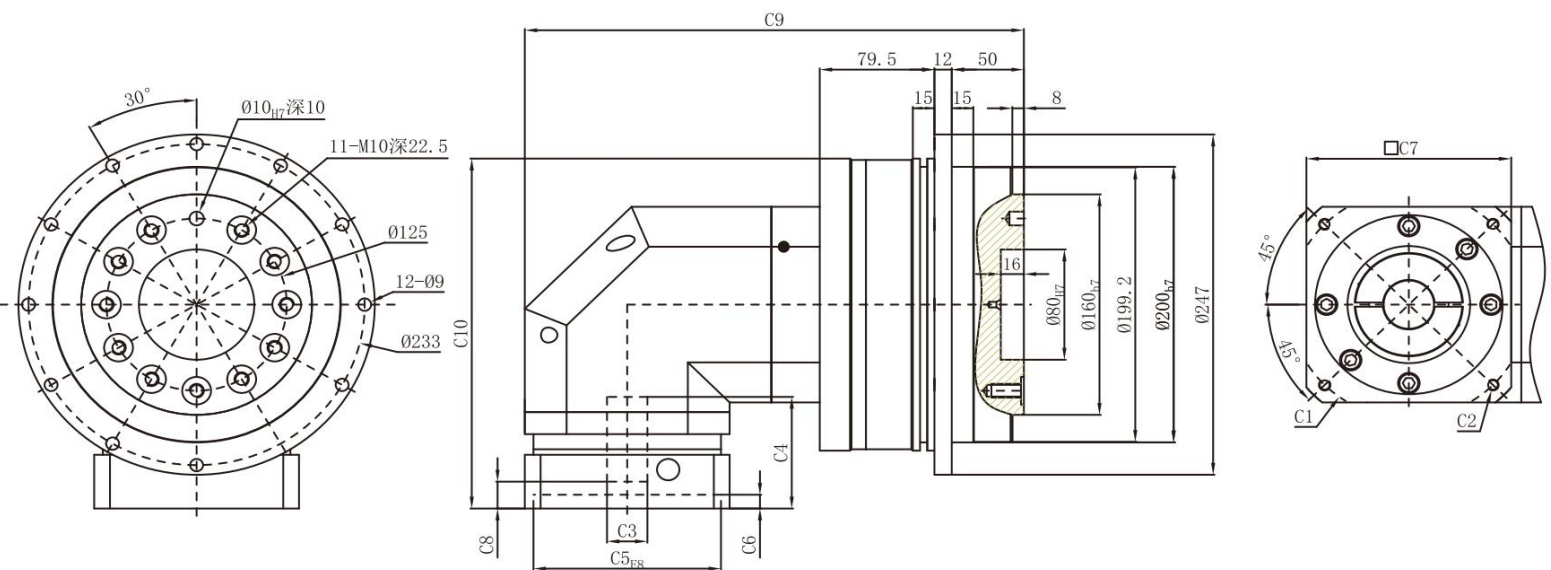
输入端/ INPUT



PGFR 200-L2

输出端/OUTPUT

输入端/ INPUT



尺寸	C1	C2	C3	C4	C5	C6	C7	C8	C9	C10
PGFR 200-L1	$\phi 165$	4-M10x25, 4-M12x35	$\leq \phi 32$	118	$\phi 130$	10	180	16.5	306.5	291.5
	$\phi 200$	4-M12x35	$\leq \phi 42$	118	$\phi 114.3$	10	180	16.5	306.5	291.5
	$\phi 215$	4-M14x35	$\leq \phi 42$	118	$\phi 180$	10	190	16.5	311.5	291.5
	$\phi 235$	4-M10x30, 4-M14x35	$\leq \phi 55$	150	$\phi 200$	10	220	48.5	326.5	323.5
PGFR 200-L2	$\phi 130$	4-M8x20	$\leq \phi 24$	81	$\phi 110$	10	142	19.5	346	254
	$\phi 145$	4-M8x20	$\leq \phi 24$	81	$\phi 110$	10	142	19.5	346	254
	$\phi 165$	4-M10x25, 4-M12x35	$\leq \phi 32$	81	$\phi 130$	10	142	19.5	346	254
	$\phi 200$	4-M12x35	$\leq \phi 42$	83	$\phi 114.3$	8	180	21.5	365	256
	$\phi 200$	4-M10x25, 4-M12x35	$\leq \phi 42$	115	$\phi 114.3$	8	180	53.5	365	288
	$\phi 215$	4-M14x35	$\leq \phi 42$	83	$\phi 180$	8	190	21.5	370	256

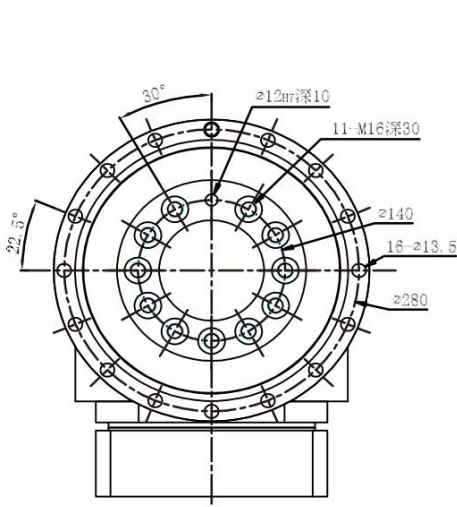
* C1~C10是公制标准马达连接板之尺寸,可根据客户要求单独定做。

* C1~C10 are motor (metric standard) specific dimensions, which could be customised.

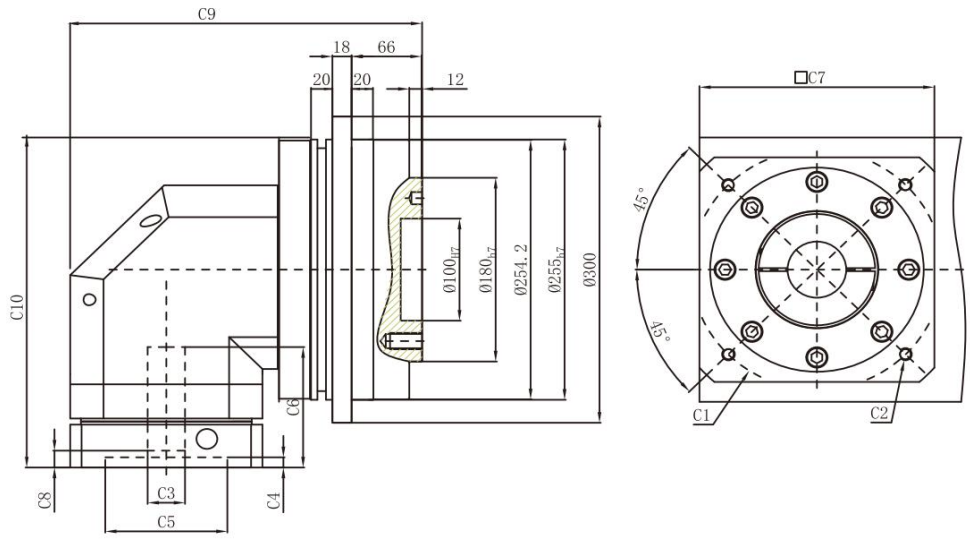
外形尺寸图表 / OUTLINE DIMENSION SHEET

PGFR 255-L1

输出端/OUTPUT

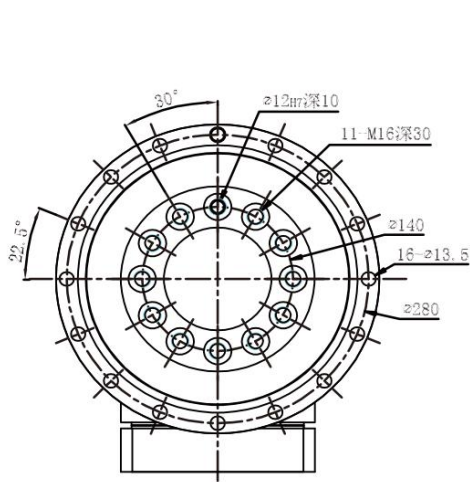


输入端/ INPUT

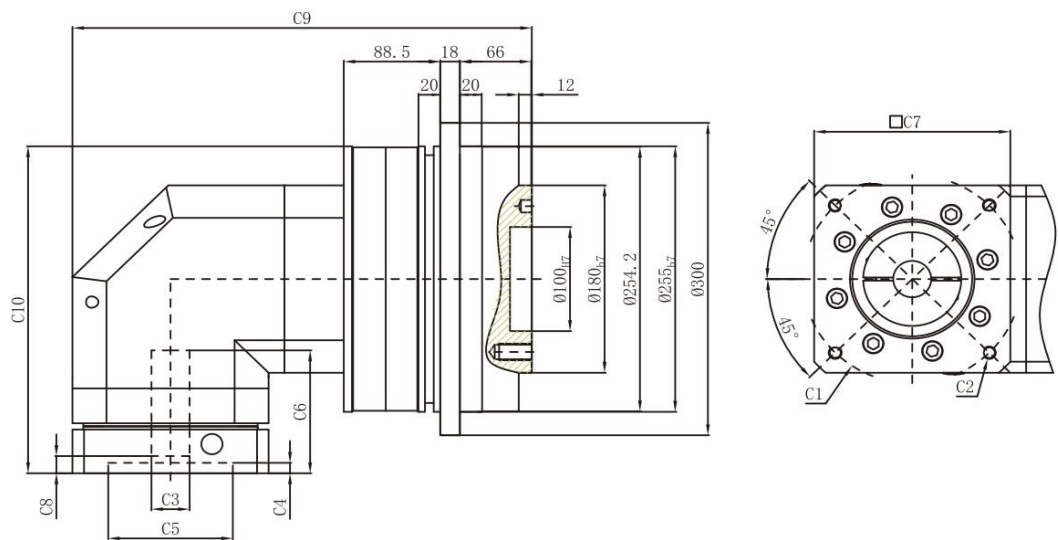


PGFR 255-L2

输出端/OUTPUT



输入端/ INPUT



尺寸	C1	C2	C3	C4	C5	C6	C7	C8	C9	C10
PGFR255-L1	φ 200	4-M12x35	≤ φ 42	119	φ 114.3	10	220	27	403	353.5
	φ 215	4-M14x35	≤ φ 42	119	φ 180	10	220	27	403	353.5
	φ 235	4-M12x35, 4-M14x35	≤ φ 55	119	φ 200	10	220	27	403	353.5
PGFR255-L2	φ 165	4-M10x25, 4-M12x35	≤ φ 32	118	φ 130	10	180	16.5	421.5	314
	φ 200	4-M12x35	≤ φ 42	118	φ 114.3	10	180	16.5	421.5	314
	φ 215	4-M12x35, 4-M14x35	≤ φ 42	118	φ 180	10	190	16.5	426.5	314
	φ 235	4-M12x35, 4-M14x35	≤ φ 55	150	φ 200	10	220	48.5	441.5	346

* C1~C10是公制标准马达连接板之尺寸,可根据客户要求单独定做。

* C1~C10are motor (metric standard) specific dimensions, which could be customised.