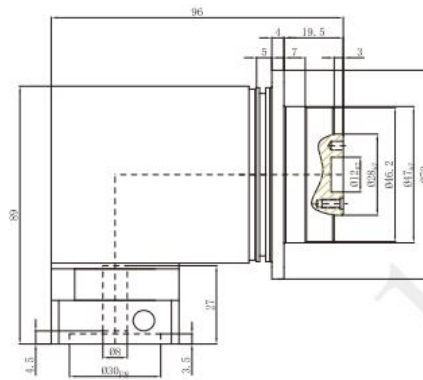
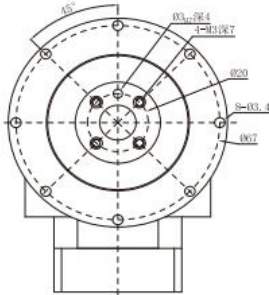


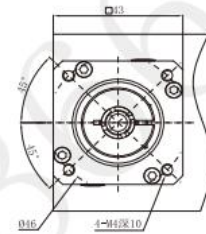
OUTLINE DIMENSION SHEET

PGFR 047-L1

OUTPUT

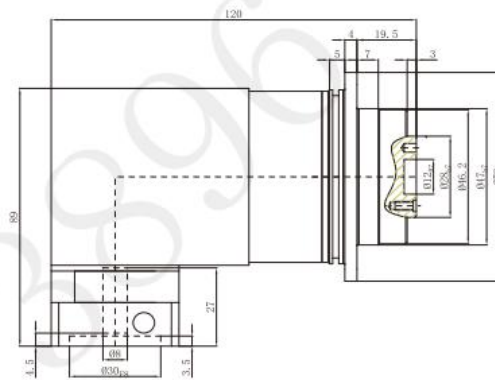
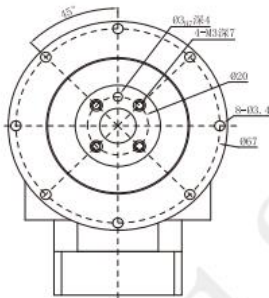


INPUT

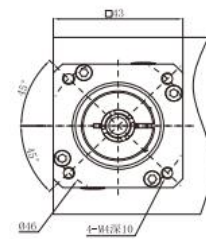


PGFR 047-L2

OUTPUT

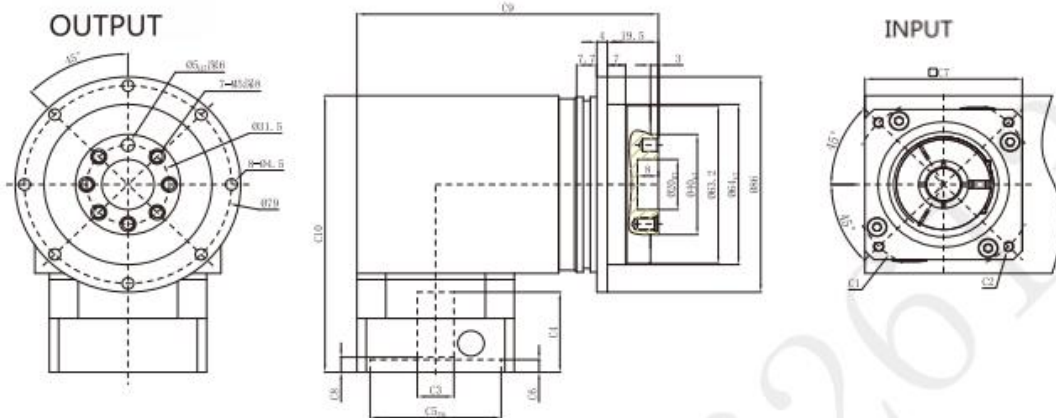


INPUT

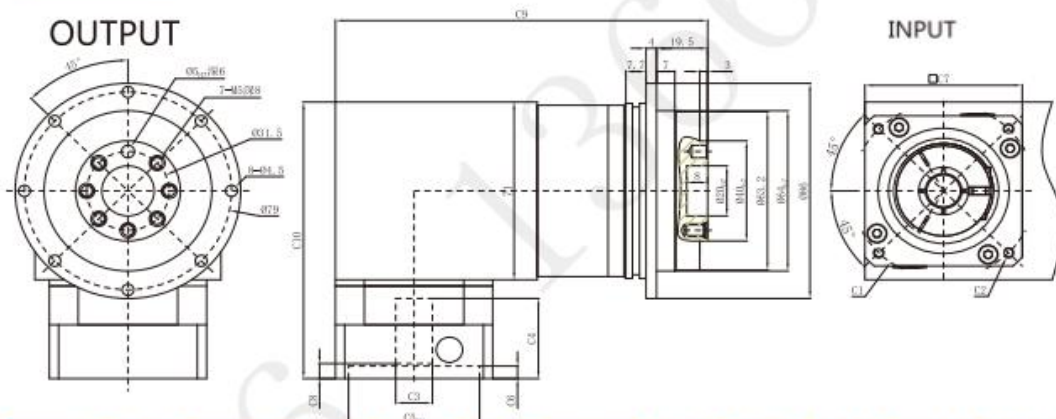


OUTLINE DIMENSION SHEET

PGFR 064-L1



PGFR 064-L2



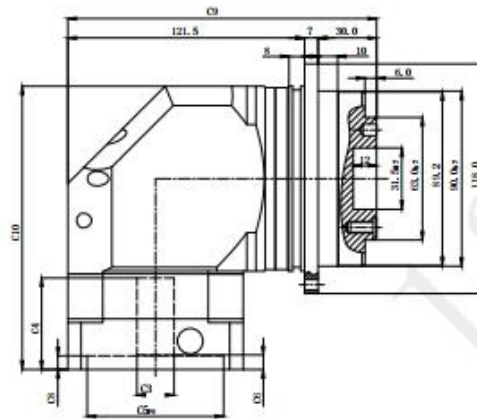
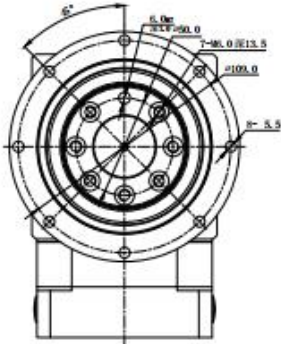
	C1	C2	C3	C4	C5	C6	C7	C8	C9	C10
PGFR064-L1	φ 46	4-M4x12,4-M5x12	≦ φ 8	37,5	φ 30	10,5	60	11,5	115	116
	φ 66,7	4-M4x12	≦ φ 8	32	φ 38,1	5	60	6	115	110,5
	φ 70	4-M4x10,4-M5x12	≦ φ 14	32	φ 50	5	60	6	115	110,5
PGFR064-L2	φ 75	4-M4x12,4-M5x12	≦ φ 14	32	φ 60	5	66	6	118	110,5
	φ 46	4-M4x12,4-M5x12	≦ φ 8	37,5	φ 30	10,5	60	11,5	142	116
	φ 66,7	4-M4x12	≦ φ 8	32	φ 38,1	5	60	6	142	110,5
PGFR064-L2	φ 70	4-M4x10,4-M5x12	≦ φ 14	32	φ 50	5	60	6	142	110,5
	φ 75	4-M4x12,4-M5x12	≦ φ 14	32	φ 60	5	66	6	145	110,5

* C1~C10 are motor (metric standard) specific dimensions, which could be customised.

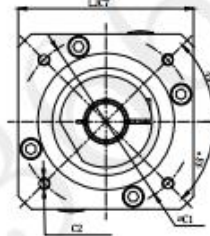
OUTLINE DIMENSION SHEET

PGFR090-L1

OUTPUT

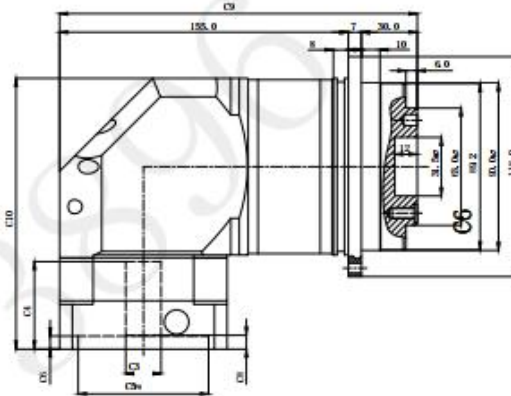
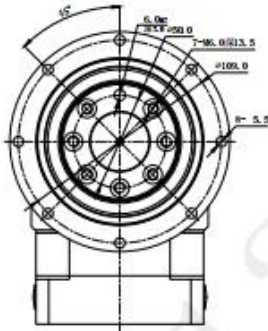


INPUT

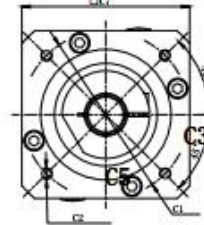


PGFR090-L2

OUTPUT



INPUT



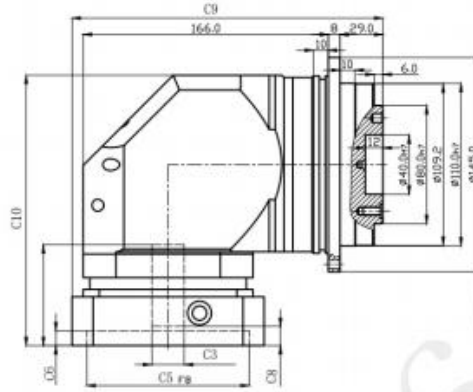
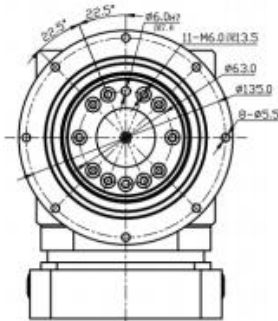
	C1	C2	C3	C4	C5	C6	C7	C8	C9	C10
PGFR090-L1	φ 70	4-M4x10,4-M5x12	≤ φ 14	47	φ 50	4	90	6.5	158.5	145.5
	φ 75	4-M4x12,4-M5x12	≤ φ 14	47	φ 60	5.5	90	6.5	158.5	145.5
	φ 90	4-M5x15,4-M6x15	≤ φ 19	47	φ 70	7	90	7.5	158.5	145.5
	φ 98.4	4-M5x15,4-M6x15	≤ φ 14	47.5	φ 73	7	90	7.5	158.5	145.5
	φ 100	4-M6x15	≤ φ 19	47.5	φ 80	7	90	12.5	158.5	145.5
	φ 115	4-M8x20	≤ φ 24	59	φ 95	10	100	12.5	163.5	157.5
	φ 130	4-M8x20	≤ φ 24	59	φ 95	10	115	12.5	171	157.5
PGFR090-L2	φ 145	4-M8x20	≤ φ 24	59	φ 110	10	130	12.5	178.5	157.5
	φ 145	4-M8x20	≤ φ 24	68	φ 110	10	130	21.5	178.5	166.5
	φ 70	4-M4x10,4-M5x12	≤ φ 14	32	φ 50	5	60	6	153.5	122.5
	φ 75	4-M4x12,4-M5x12	≤ φ 14	32	φ 60	5	66	6	156.5	122.5
	φ 90	4-M5x15,4-M6x15	≤ φ 19	47	φ 70	7	90	7.5	192	145.5
	φ 98.4	4-M5x15,4-M6x15	≤ φ 14	47.5	φ 73	7	90	7.5	192	145.5
	φ 100	4-M6x15	≤ φ 19	47.5	φ 80	7	90	12.5	192	145.5
	φ 115	4-M8x20	≤ φ 24	59	φ 95	10	100	12.5	197	157.5
	φ 130	4-M8x20	≤ φ 24	59	φ 95	10	115	12.5	204.5	157.5
	φ 145	4-M8x20	≤ φ 24	59	φ 110	10	130	12.5	212	157.5
	φ 145	4-M8x20	≤ φ 24	68	φ 110	10	130	21.5	212	166.5

* C1~C10 are motor (metric standard) specific dimensions, which could be customised.

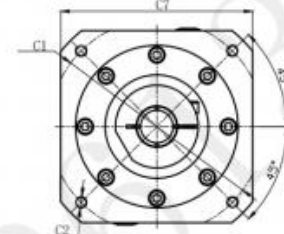
OUTLINE DIMENSION SHEET

PGFR 110-L1

OUTPUT

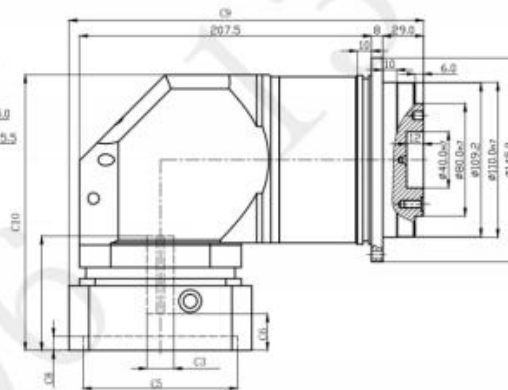


INPUT

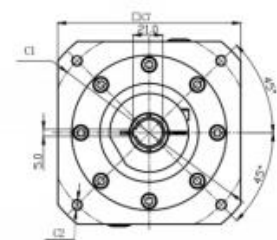


PGFR 110-L2

OUTPUT



INPUT



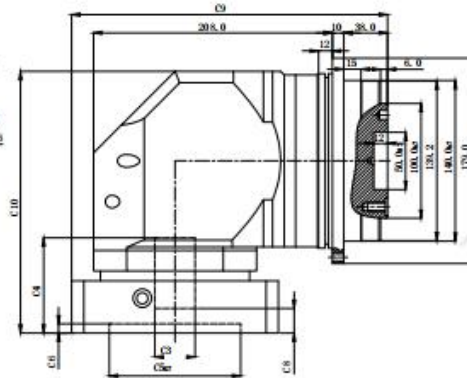
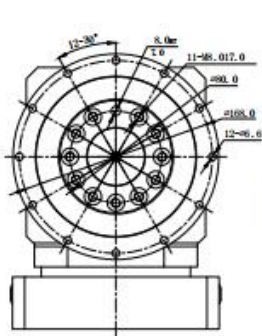
	C1	C2	C3	C4	C5	C6	C7	C8	C9	C10
PGFR 110-L1	φ 90	4-M5x15,4-M6x15	≤ φ 19	62	φ 70	7	115	12	200	183
	φ 100	4-M6x15	≤ φ 19	62	φ 80	7	115	12	200	183
	φ 115	4-M8x20	≤ φ 24	62	φ 95	10	115	13	200	183
	φ 145	4-M8x20	≤ φ 24	62	φ 110	10	130	13	207.5	183
	φ 145	4-M8x20	≤ φ 24	71	φ 110	10	130	13	207.5	192
PGFR 110-L2	φ 90	4-M5x15,4-M6x15	≤ φ 19	47	φ 70	7	90	7.5	206.5	158
	φ 100	4-M6x15	≤ φ 19	47	φ 80	7	90	7.5	206.5	158
	φ 115	4-M8x20	≤ φ 24	59	φ 95	10	115	12.5	219	170
	φ 145	4-M8x20	≤ φ 24	59	φ 110	10	130	12.5	226.5	170
	φ 145	4-M8x20	≤ φ 24	68	φ 110	10	130	21.5	226.5	179

* C1~C10 are motor (metric standard) specific dimensions, which could be customised.

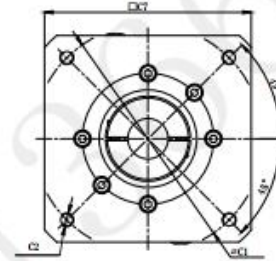
OUTLINE DIMENSION SHEET

PGFR 140-L1

OUTPUT

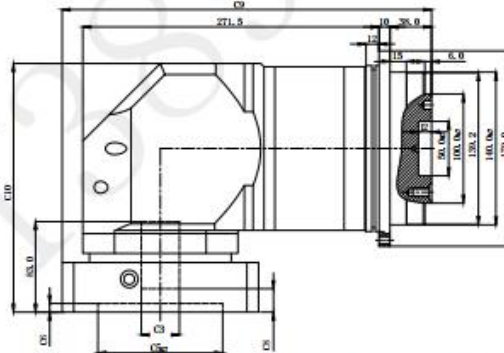
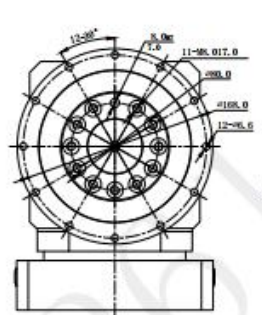


INPUT

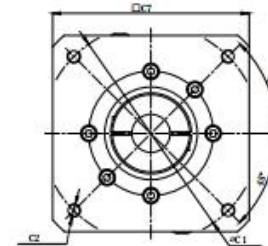


PGFR 140-L2

OUTPUT



INPUT



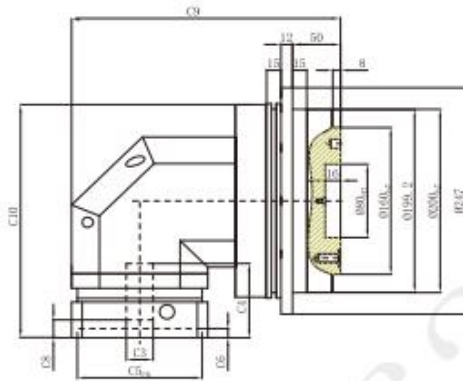
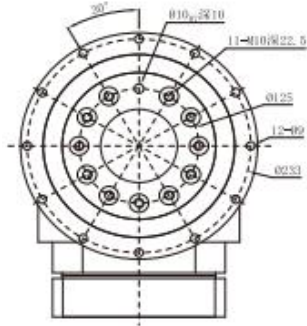
	C1	C2	C3	C4	C5	C6	C7	C8	C9	C10
PGFR140-L1	φ 145	4-M8x20	≤ φ 28	81	φ 110	10	142	19.5	256	226
	φ 165	4-M10x25, 4-M12x35	≤ φ 32	81	φ 130	10	142	19.5	256	226
	φ 200	4-M12x35	≤ φ 42	83	φ 114.3	8	180	21.5	275	228
PGFR140-L2	φ 200	4-M12x35	≤ φ 42	115	φ 114.3	8	180	53.5	275	260
	φ 145	4-M8x25	≤ φ 24	62	φ 110	10	142	13	271.5	198.5
	φ 165	4-M10x30	≤ φ 28	62	φ 130	10	142	13	271.5	198.5

* C1-C10 are motor (metric standard) specific dimensions, which could be customised.

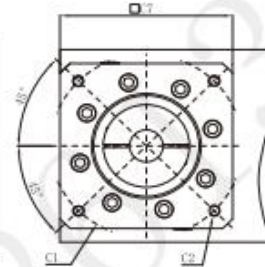
OUTLINE DIMENSION SHEET

PGFR 200-L1

OUTPUT

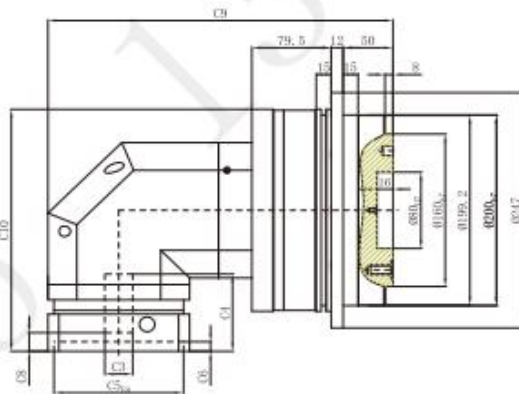
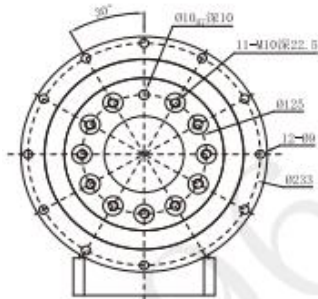


INPUT

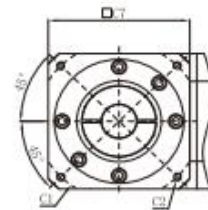


PGFR 200-L2

OUTPUT



INPUT



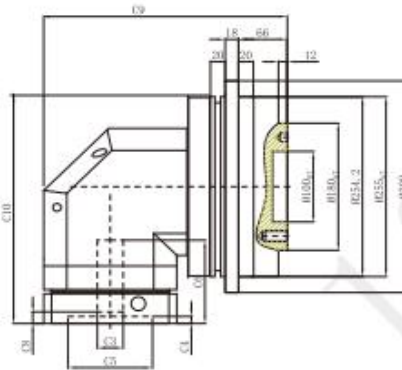
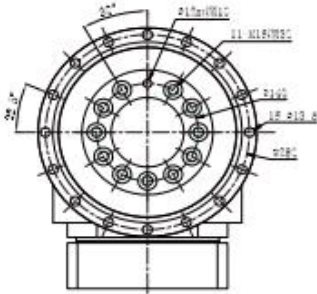
尺寸	C1	C2	C3	C4	C5	C6	C7	C8	C9	C10
PGFR 200-L1	φ165	4-M10x25, 4-M12x35	≦ φ32	118	φ130	10	180	16.5	306.5	291.5
	φ200	4-M12x35	≦ φ42	118	φ114.3	10	180	16.5	306.5	291.5
	φ215	4-M14x35	≦ φ42	118	φ180	10	190	16.5	311.5	291.5
PGFR 200-L2	φ235	4-M10x30, 4-M14x35	≦ φ55	150	φ200	10	220	48.5	326.5	323.5
	φ130	4-M8x20	≦ φ24	81	φ110	10	142	19.5	346	254
	φ145	4-M8x20	≦ φ24	81	φ110	10	142	19.5	346	254
	φ165	4-M10x25, 4-M12x35	≦ φ32	81	φ130	10	142	19.5	346	254
	φ200	4-M12x35	≦ φ42	83	φ114.3	8	180	21.5	365	256
	φ200	4-M10x25, 4-M12x35	≦ φ42	115	φ114.3	8	180	53.5	365	288
	φ215	4-M14x35	≦ φ42	83	φ180	8	190	21.5	370	256

* C1~C10 are motor (metric standard) specific dimensions, which could be customised.

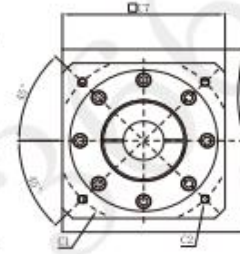
OUTLINE DIMENSION SHEET

PGFR 255-L1

OUTPUT

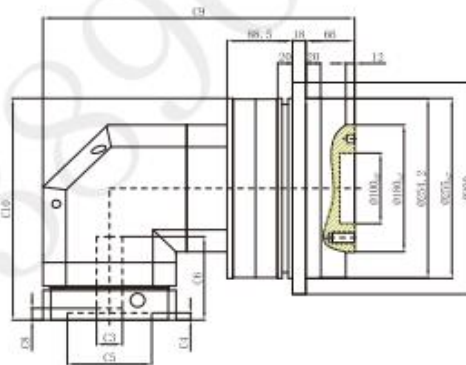
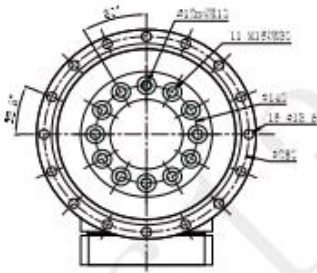


INPUT

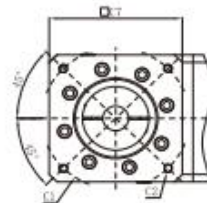


PGFR 255-L2

OUTPUT



INPUT



尺寸	C1	C2	C3	C4	C5	C6	C7	C8	C9	C10
PGFR255-L1	φ200	4-M12x35	≤ φ42	119	φ114.3	10	220	27	403	353.5
	φ215	4-M14x35	≤ φ42	119	φ180	10	220	27	403	353.5
	φ235	4-M12x35, 4-M14x35	≤ φ55	119	φ200	10	220	27	403	353.5
PGFR255-L2	φ165	4-M10x25, 4-M12x35	≤ φ32	118	φ130	10	180	16.5	421.5	314
	φ200	4-M12x35	≤ φ42	118	φ114.3	10	180	16.5	421.5	314
	φ215	4-M12x35, 4-M14x35	≤ φ42	118	φ180	10	190	16.5	426.5	314
	φ235	4-M12x35, 4-M14x35	≤ φ55	150	φ200	10	220	48.5	441.5	346

* C1~C10 are motor (metric standard) specific dimensions, which could be customised.