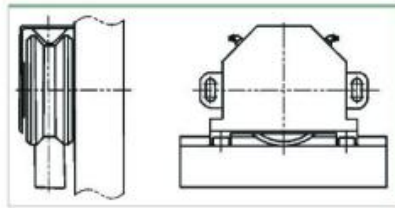
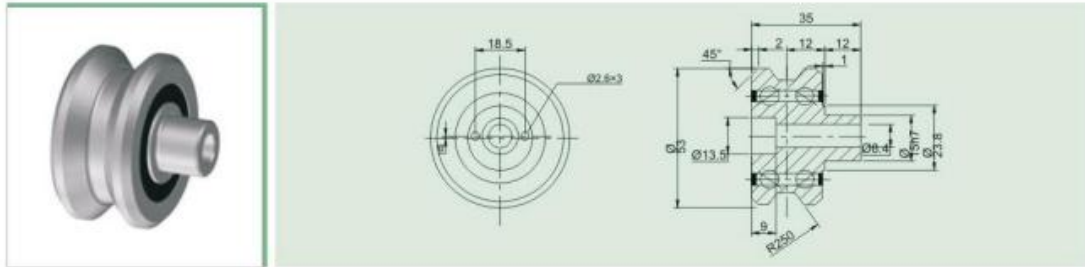


①Size 15 Roller For Guideway V Bars,mounting Flange,wiper&lubrication Unit

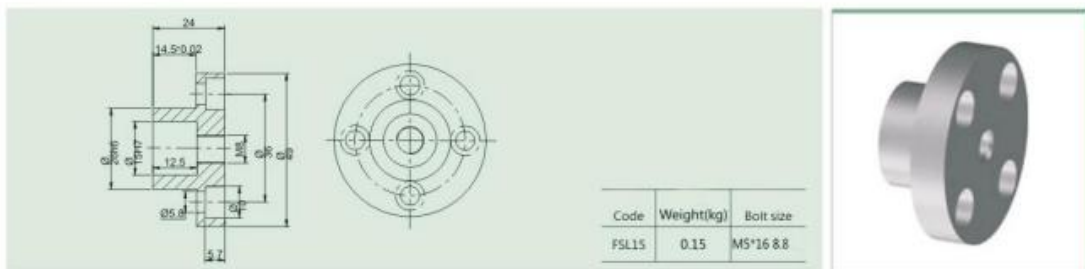


Roller for guideway V bars

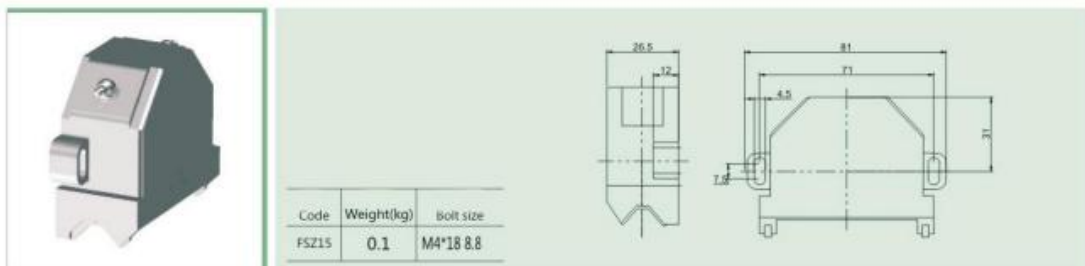


Code	Excenter	Ga ( $\mu\text{m}$ )	$C_{0w}$ (N)	$C_w^{(1)}$ (N)	$C_w^{(2)}$ (N)	Nmax ( $\text{min}^{-1}$ )	Bolt size
VL15A	1mm	-3/+5	6100	6500	1400	9000	M8*35 8.8
VL15B	0	-3/+5	6100	6500	1400	9000	M8*35 8.8

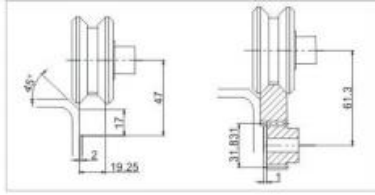
Mounting fange



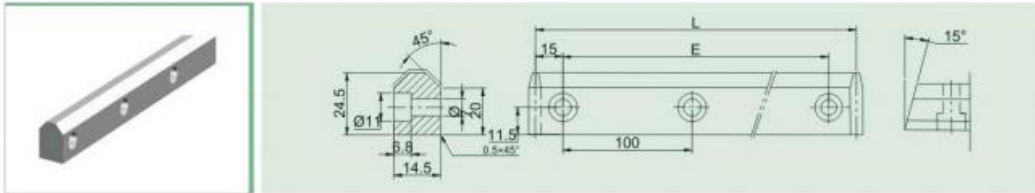
Wiper& lubrication unit



②Size 15 Roller For Guideway V Bars,Guideway V Bars rack,pinion

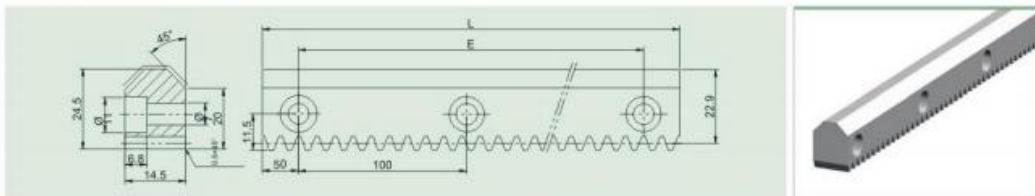


Guideway V bar



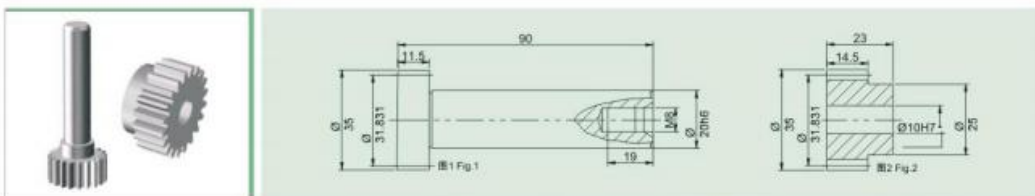
Code	L	E	Material	Bolt size
VG1501	630	600	SCM440	M8*16 8.8
VG1511	1030	1000	SCM440	M8*16 8.8

Guideway V bar rack



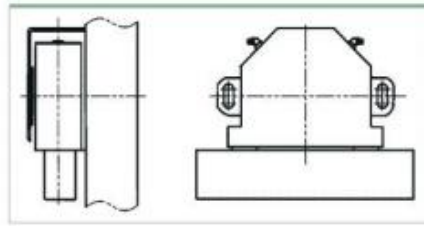
Code	L	E	Module	Pitch	Precision grade	Material
VDG150101	1200	1100	1.5915	5.0	DIN6	SCM440
VDG151101	1100	1000	1.5915	5.0	DIN6	SCM440
VDG150104	1000	900	1.5915	5.0	DIN6	SCM440

Drive pinion

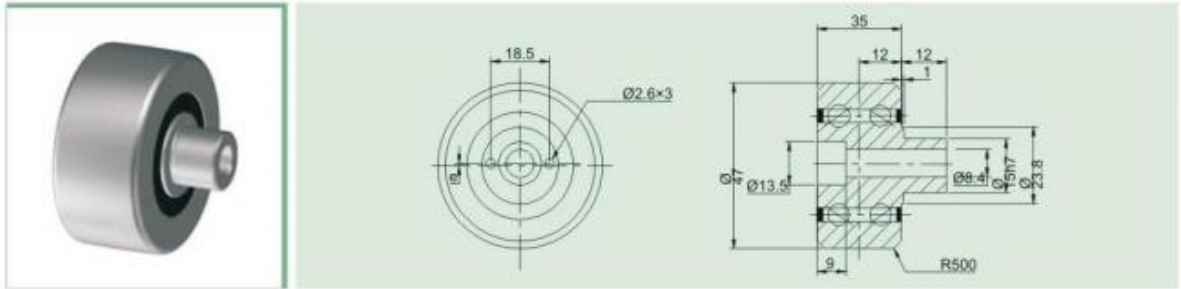


Code	Z	Module	P	Fig.	Precision grade	Max drive force
CSDL15	20	1.5915	5.0	1	DIN6	3KN
CSEL15	20	1.5915	5.0	2	DIN6	4KN

③Size 15 Roller For Plain Roleer Mounting flange,wiper&lubrication Unit.



Plain roller

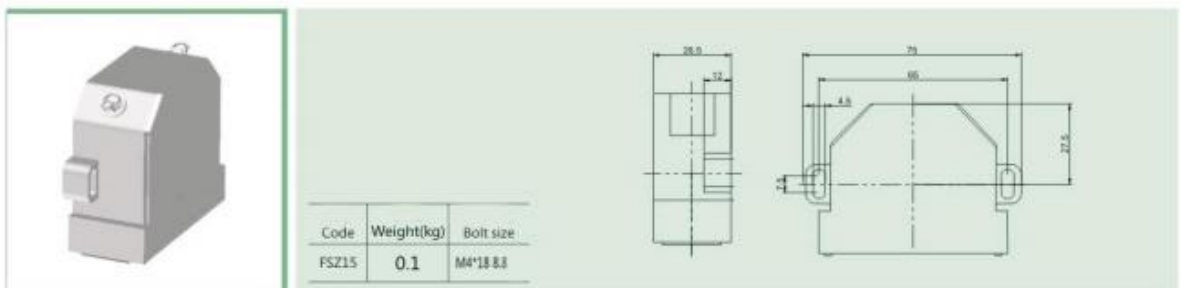


Code	Excenter	Ga ( $\mu\text{m}$ )	$C_{\text{ow}}$ (N)	$C_w^{(1)}$ (N)	$C_w^{(2)}$ (N)	Nmax ( $\text{min}^{-1}$ )	Bolt size
PL15A	1mm	-3/+5	6100	6500	1400	9000	M8*35 8.8
PL15B	0	-3/+5	6800	7200	1560	9000	M8*35 8.8

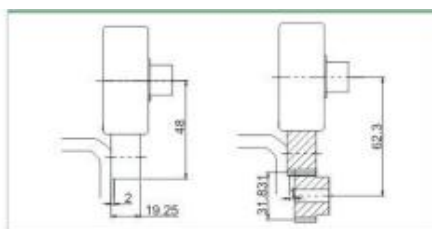
Mounting flange



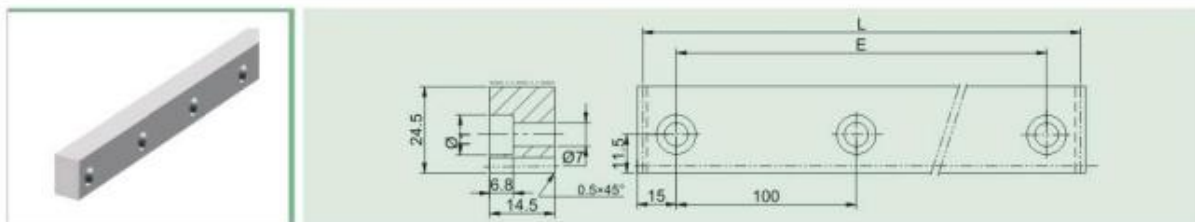
Wiper& lubrication unit



④Size 15 Guideway Flat Rail, guideway Flat Rail Rack, pinion

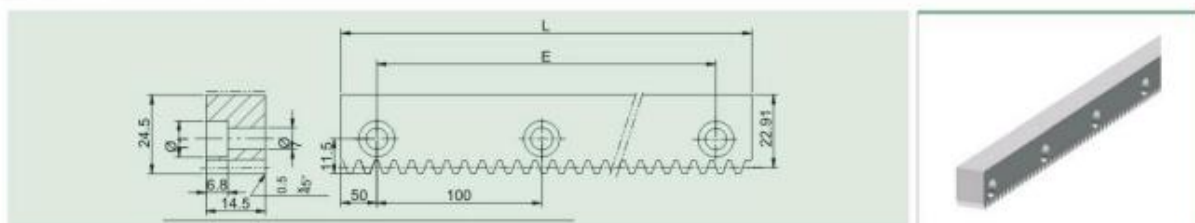


Guideway fat rail



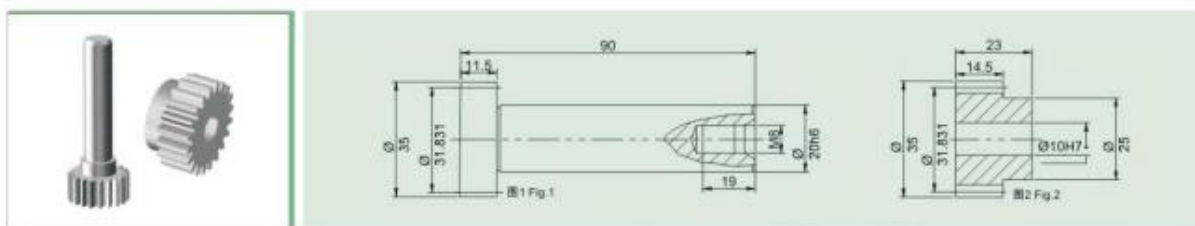
Code	L	E	Material	Bolt size
PG1501	630	600	SCM440	M6*16 8.8級
PG1511	1030	1000	SCM440	M6*16 8.8級

Guideway fat rail rack



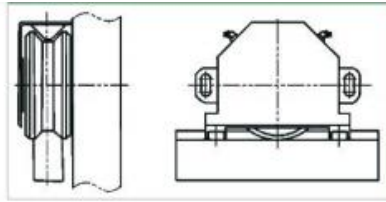
Code	L	E	Module	Pitch	Precision grade	Material
PDG150101	1200	1100	1.5915	5.0	DIN6	SCM440
PDG151101	1100	1000	1.5915	5.0	DIN6	SCM440
PDG150104	1000	900	1.5915	5.0	DIN6	SCM440

Drive pinion

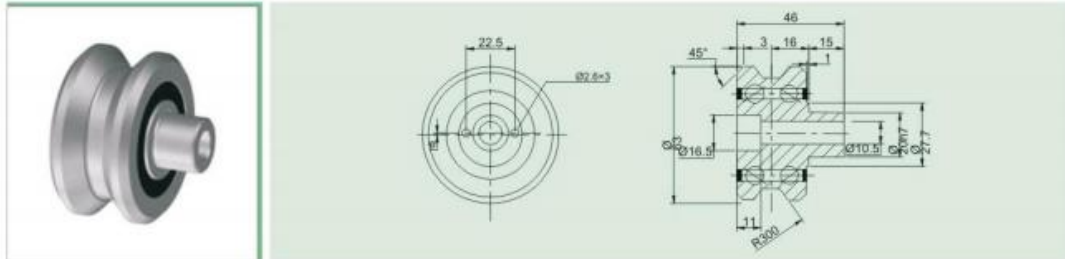


Code	Z	Module	P	Fig.	Precision grade	Max drive force
CSDL15	20	1.5915	5.0	1	DIN6	3KN
CSEL15	20	1.5915	5.0	2	DIN6	4KN

⑤ Size 20 Roller For Guideway V Bars, Mounting flange, Wiper & lubrication unit

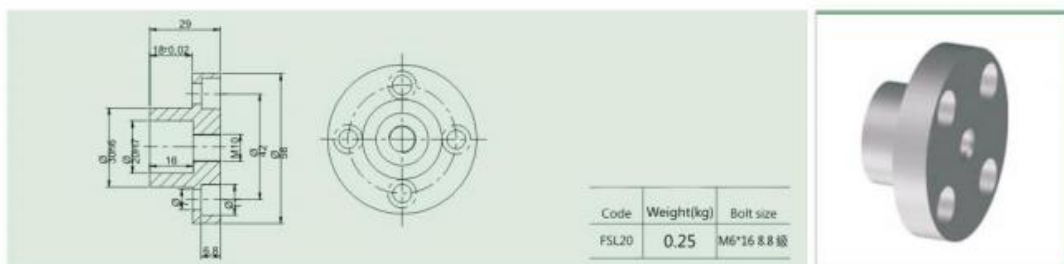


Roller for guideway V bars

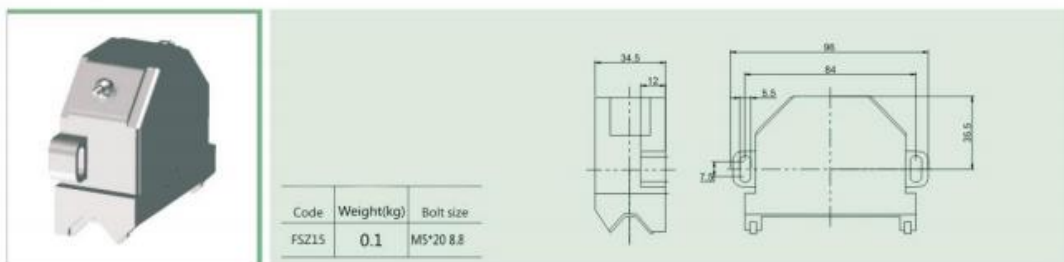


Code	Excenter	Ga ( $\mu\text{m}$ )	$C_{0w}$ (N)	$C_w^{①}$ (N)	$C_w^{②}$ (N)	Nmax ( $\text{min}^{-1}$ )	Bolt size
VL20A	1mm	-3/+5	8600	9000	2000	7000	M10*50 8.8
VL20B	0	-3/+5	8600	9000	2000	7000	M10*50 8.8

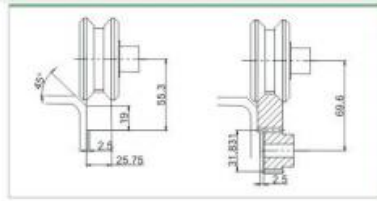
Mounting flange



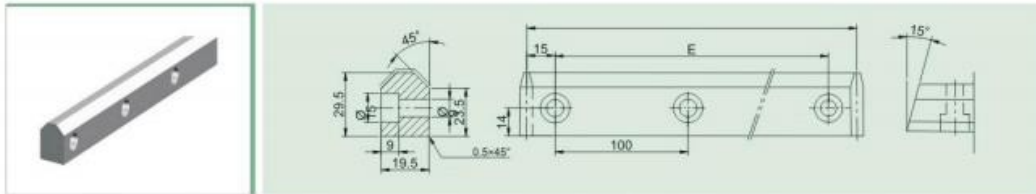
Wiper & lubrication unit



©Size 20 Roller For Guideway V Bars,Guideway V Bars rack, pinion

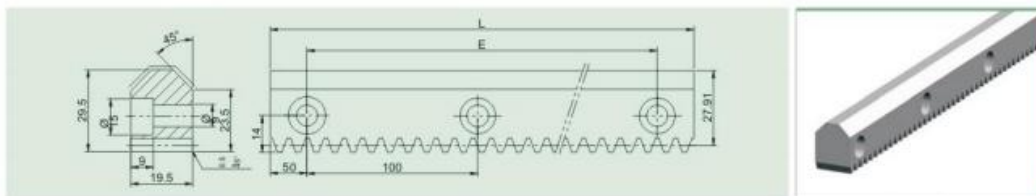


Guideway V bar



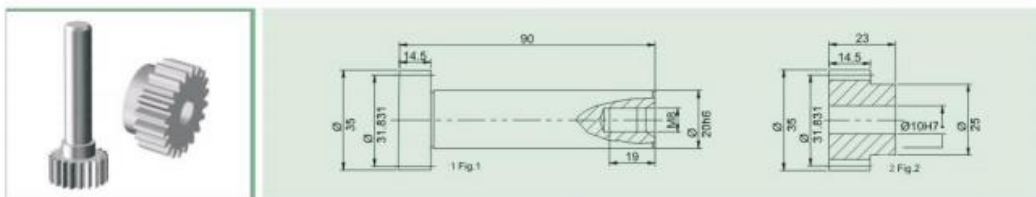
Code	L	E	Material	Bolt size
VG2001	630	600	SCM440	M8*20 8.8
VG2011	1030	1000	SCM440	M8*20 8.8

Guideway V bar rack



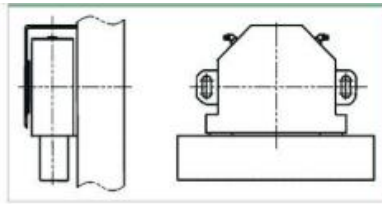
Code	L	E	Module	Pitch	Precision grade	Material
VDG200101	1200	1100	1.5915	5.0	DIN6	SCM440
VDG201101	1100	1000	1.5915	5.0	DIN6	SCM440
VDG200104	1000	900	1.5915	5.0	DIN6	SCM440

Drive pinion

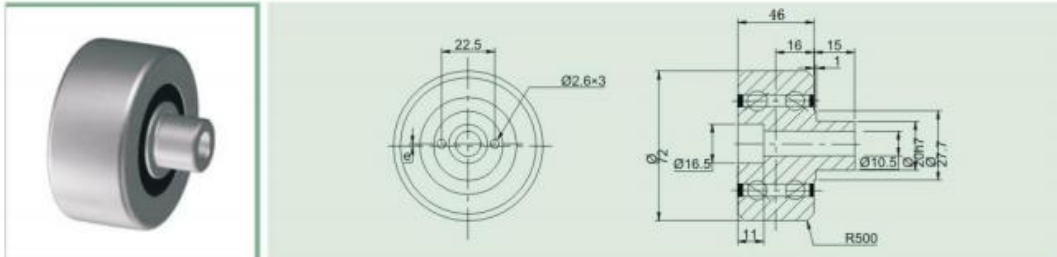


Code	Z	Module	P	Fig.	Precision grade	Max drive force
CSDL20	20	1.5915	5.0	1	DIN6	4KN
CSEL20	20	1.5915	5.0	2	DIN6	4KN

⑦Size 20 Roller For Plain Roller Mounting flange,wiper&lubrication Unit

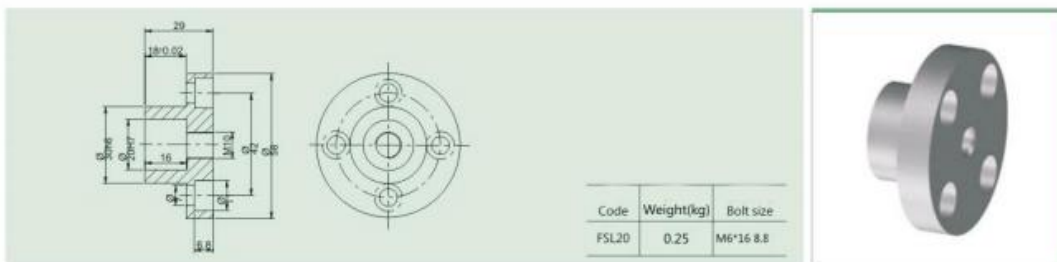


Plain roller

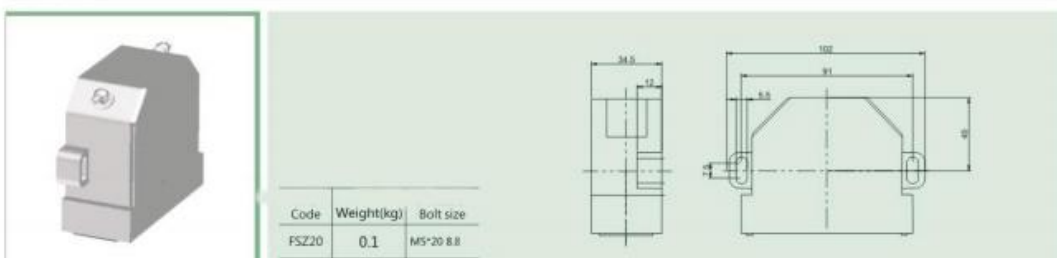


Code	Excenter	Ga ( $\mu\text{m}$ )	$C_{0W}$ (N)	$C_{W}^{\text{II}}$ (N)	$C_{W}^{\text{III}}$ (N)	Nmax ( $\text{min}^{-1}$ )	Bolt size
PL20A	1mm	-3/+5	8600	9000	2000	7000	M10*50 8.8
PL20B	0	-3/+5	9500	10200	2200	7000	M10*50 8.8

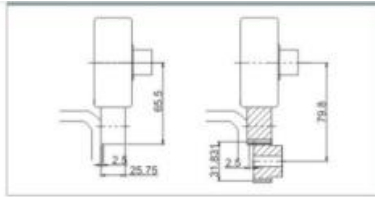
Mounting flange



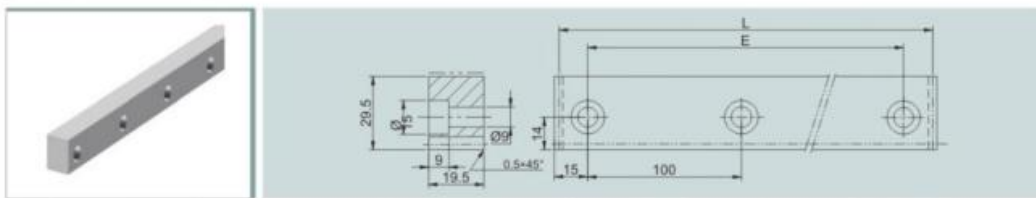
Wiper & lubrication unit



⑧Size 20 Guideway Flat Rail, guideway Flat Rail Rack, pinion

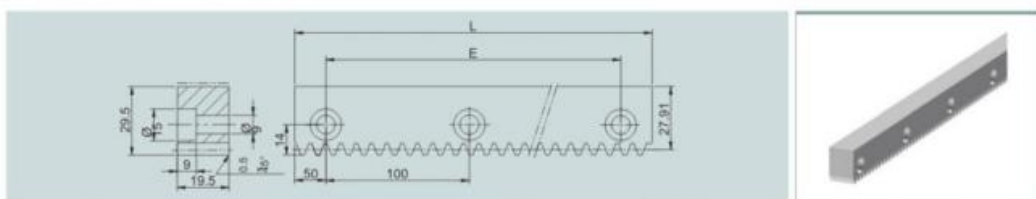


Guideway fat rail



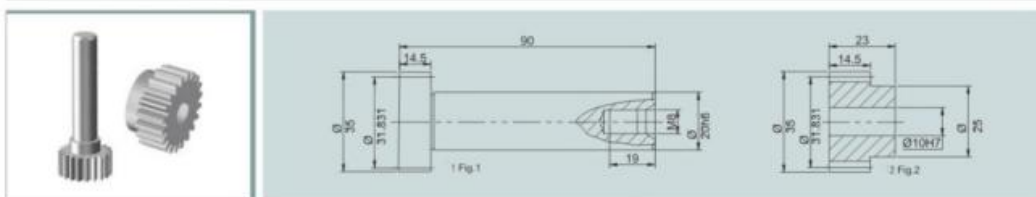
Code	L	E	Material	Bolt size
PG2001	630	600	SCM440	M8*20 8.8
PG2011	1030	1000	SCM440	M8*20 8.8

Guideway fat rail rack



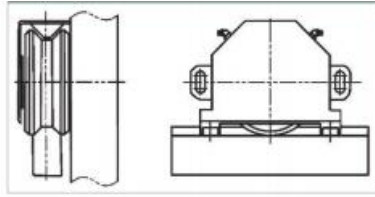
Code	L	E	Module	Pitch	Precision grade	Material
PDGR200101	1200	1100	1.5915	5.0	DIN6	SCM440
PDGR201101	1100	1000	1.5915	5.0	DIN6	SCM440
PDGR200104	1000	900	1.5915	5.0	DIN6	SCM440

Drive pinion

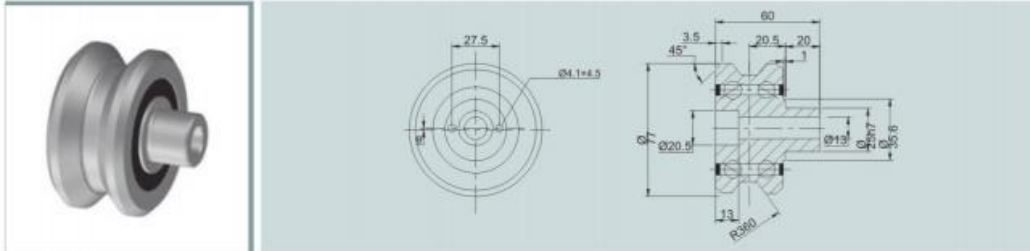


Code	Z	Module	p	Fig.	Precision grade	Max drive force
CSDL20	20	1.5915	5.0	1	DIN6	4KN
CSEL20	20	1.5915	5.0	2	DIN6	4KN

⑨Size 25 Roller For Guideway V bars,Mounting flange,Wiper&lubrication unit

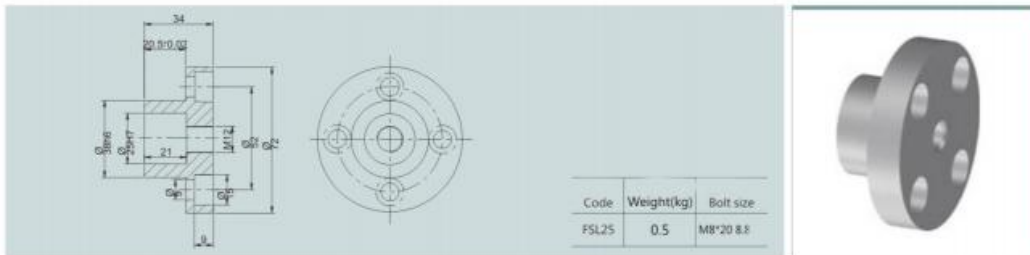


Roller for guideway V bars

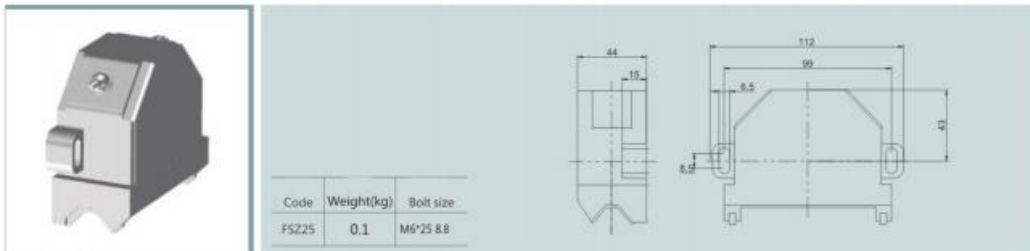


Code	Excenter	Ga ( $\mu\text{m}$ )	$C_{0W}$ (N)	$C_{W}^{(1)}$ (N)	$C_{W}^{(2)}$ (N)	Nmax ( $\text{min}^{-1}$ )	Bolt size
VL25A	1mm	-3/+5	13500	14700	3200	5600	M12*60 8.8
VL25B	0	-3/+5	13500	14700	3200	5600	M12*60 8.8

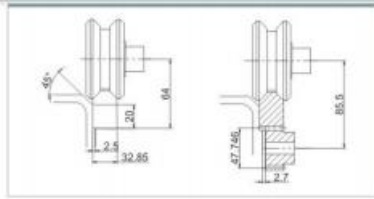
Mounting flange



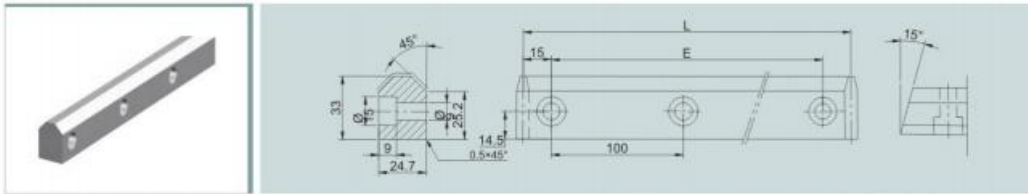
Wiper & lubrication unit



⑩Size 25 Roller For Guideway V Bars, Guideway V Bars rack, pinion

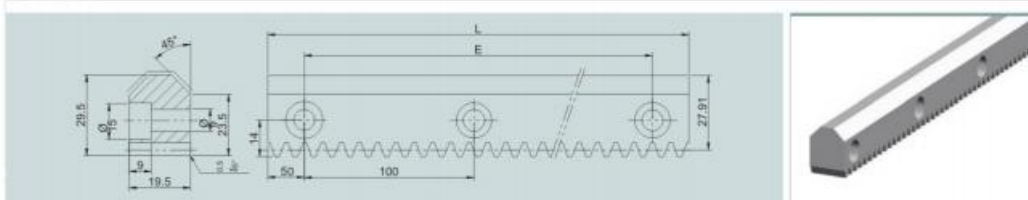


Guideway V bar



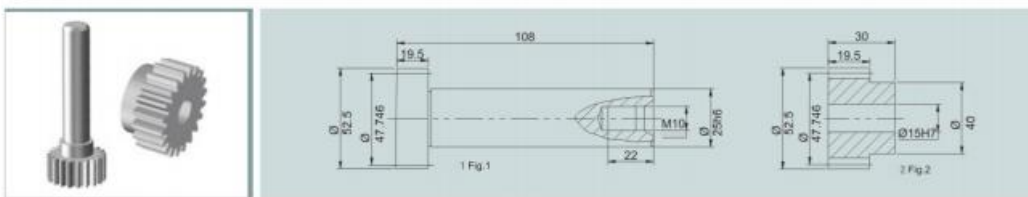
Code	L	E	Material	Bolt size
VG2501	630	600	SCM440	M8*25 8.8
VG2511	930	900	SCM440	M8*25 8.8
VG2512	1230	1200	SCM440	M8*25 8.8

Guideway V bar rack



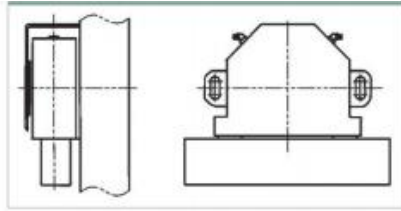
Code	L	E	Module	Pitch	Precision grade	Material
VDGR250101	1200	1100	2.3873	7.5	DIN6	SCM440
VDGR251101	1100	1000	2.3873	7.5	DIN6	SCM440
VDGR251201	1000	900	2.3873	7.5	DIN6	SCM440

Drive pinion

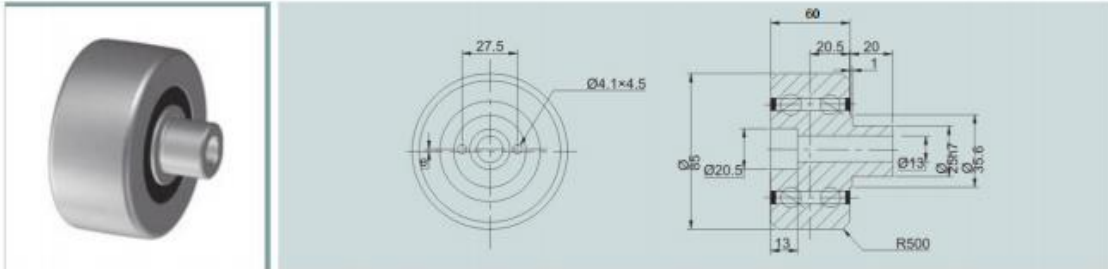


Code	Z	Module	P	Fig.	Precision grade	Max drive force
CSDL25	20	2.3873	7.5	1	DIN6	3KN
CSEL25	20	2.3873	7.5	2	DIN6	4KN

(11)Size 25 Roller For Plain Roller Mounting flange, wiper&lubrication Unit

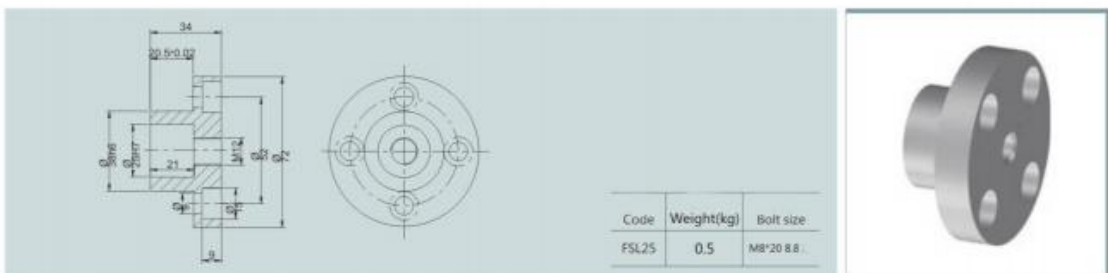


Plain roller

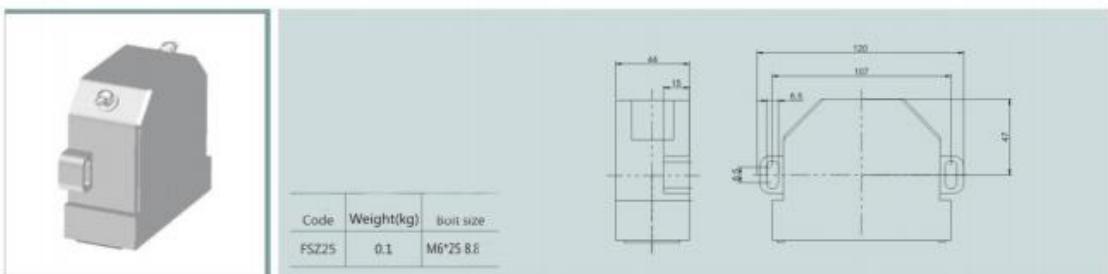


Code	Excenter	Ga ( $\mu\text{m}$ )	$C_{0W}$ (N)	$C_{W}^{II}$ (N)	$C_{W}^{III}$ (N)	Nmax ( $\text{min}^{-1}$ )	Bolt size
PL25A	1mm	-3/+5	13500	14700	3200	5600	M12*60 8.8
PL25B	0	-3/+5	15000	16300	3530	5600	M12*60 8.8

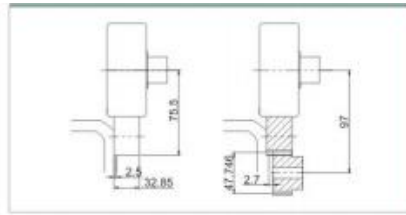
Mounting flange



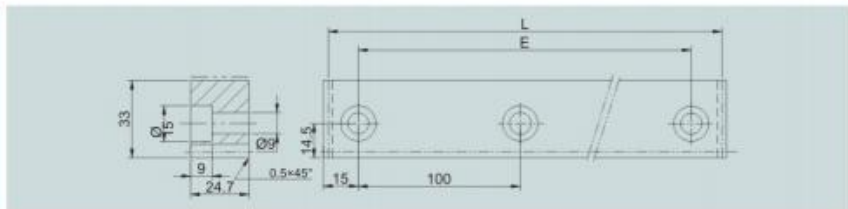
Wiper& lubrication unit



(12)Size 25 Guideway Flat Rail, guideway Flat Rail Rack, pinion

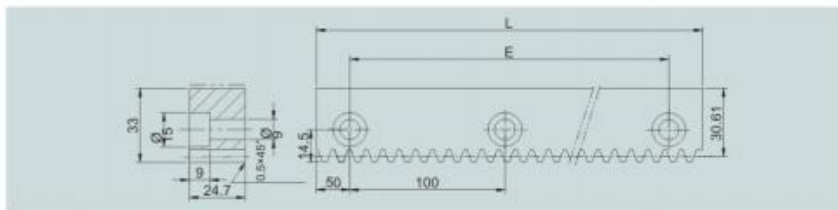


Guideway fat rail



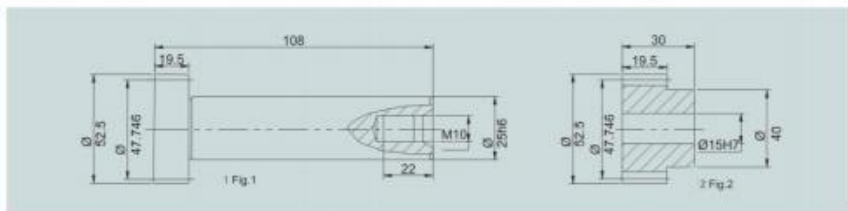
Code	L	E	Material	bolt size
PG2501	630	600	SCM440	M8*25 8.8
PG2511	930	900	SCM440	M8*25 8.8
PG2512	1230	1200	SCM440	M8*25 8.8

Guideway fat rail rack



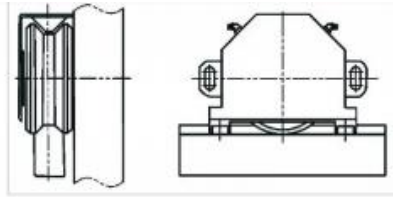
Code	L	E	Module	Pitch	Precision grade	Material
VDGR250101	1200	1100	2.3873	7.5	DIN6	SCM440
VDGR251101	1100	1000	2.3873	7.5	DIN6	SCM440
VDGR251201	1000	900	2.3873	7.5	DIN6	SCM440

Drive pinion

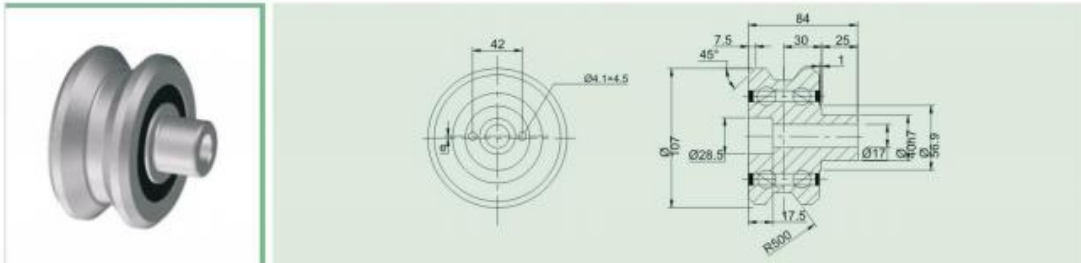


Code	Z	Module	P	Fig.	Precision grade	Max drive force
CSDL25	20	2.3873	7.5	1	DIN6	3KN
CSEL25	20	2.3873	7.5	2	DIN6	4KN

(13)Size 35 Roller For Guideway V bars,Mounting flange,Wiper&lubrication unit

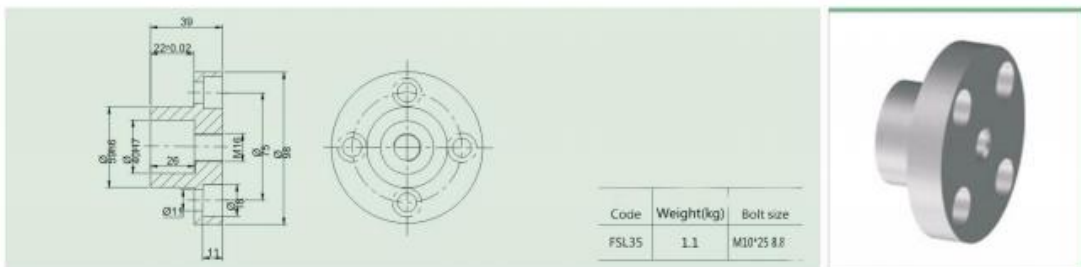


Roller for guideway V bars



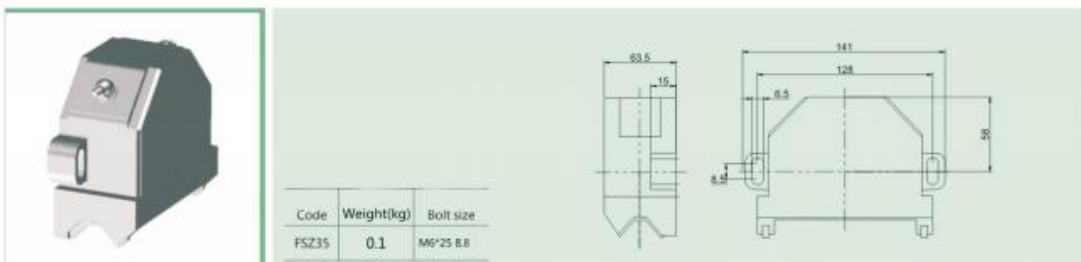
Code	Excenter	Ga ( $\mu\text{m}$ )	$C_{0W}$ (N)	$C_W^{10}$ (N)	$C_W^{20}$ (N)	$N_{\text{max}}$ ( $\text{min}^{-1}$ )	Bolt size
VL35A	1mm	-3/+5	28800	25600	5500	3600	M16*80 8.8
VL35B	0	-3/+5	28800	25600	5500	3600	M16*80 8.8

Mounting flange



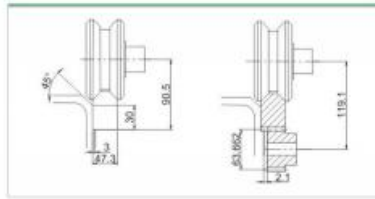
Code	Weight(kg)	Bolt size
FSL35	1.1	M10*25 8.8

Wiper&lubrication unit

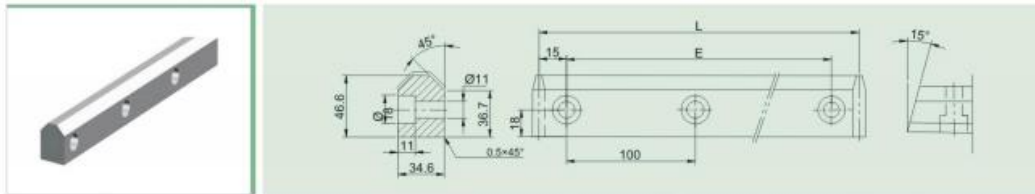


Code	Weight(kg)	Bolt size
FSZ35	0.1	M6*25 8.8

(14)Size 35 Roller For Guideway V Bars,Guideway V Bars rack, pinion

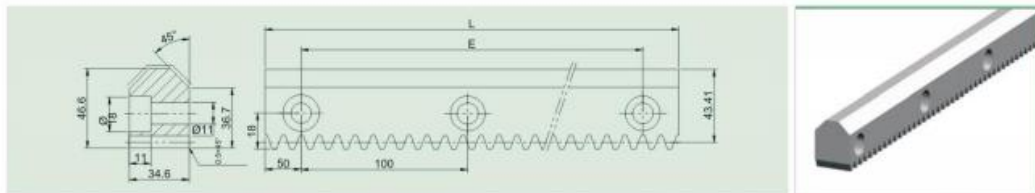


Guideway V bar



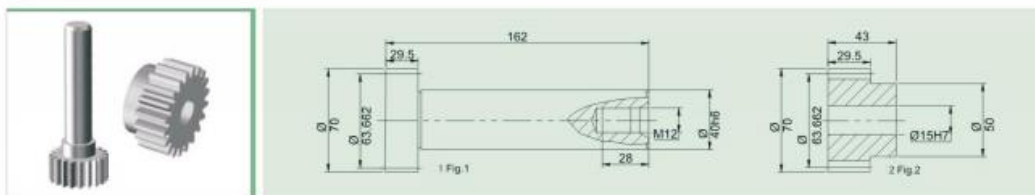
Code	L	E	Material	Bolt size
VG3501	630	600	SCM440	M10*35 8.8
VG3511	930	900	SCM440	M10*35 8.8
VG3512	1230	1200	SCM440	M10*35 8.8

Guideway V bar rack



Code	L	E	Module	Pitch	Precision grade	Material
VDGR350101	1200	1100	3.1831	10	DIN6	SCM440
VDGR351101	1100	1000	3.1831	10	DIN6	SCM440
VDGR351201	1000	900	3.1831	10	DIN6	SCM440

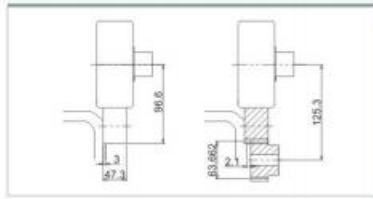
Drive pinion



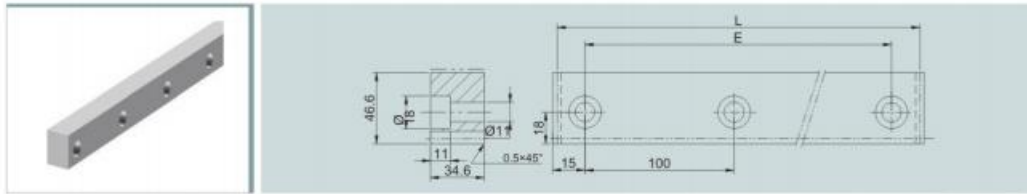
Code	Z	Module	P	Fig.	Precision grade	Max drive force
CSDL35	20	3.1831	10.0	1	DIN6	18.5KN
CSEL35	20	3.1831	10.0	2	DIN6	18.5KN



(16)Size 35 Guideway Flat Rail, guideway Flat Rail Rack, pinion

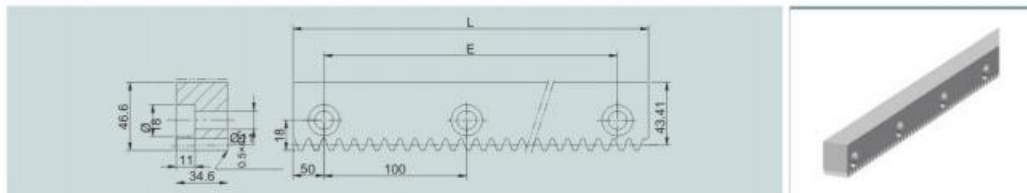


Guideway fat rail



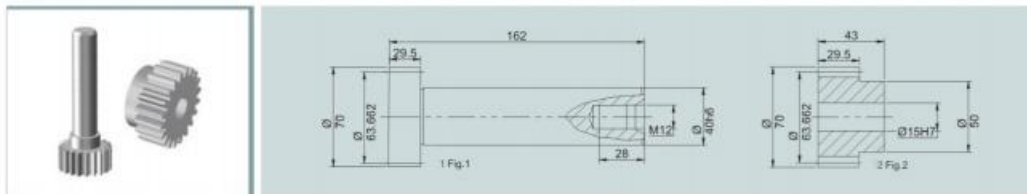
Code	L	E	Material	Bolt size
PG3501	630	600	SCM440	M10*35 8.8
PG3511	930	900	SCM440	M10*35 8.8
PG3512	1230	1200	SCM440	M10*35 8.8

Guideway fat rail rack



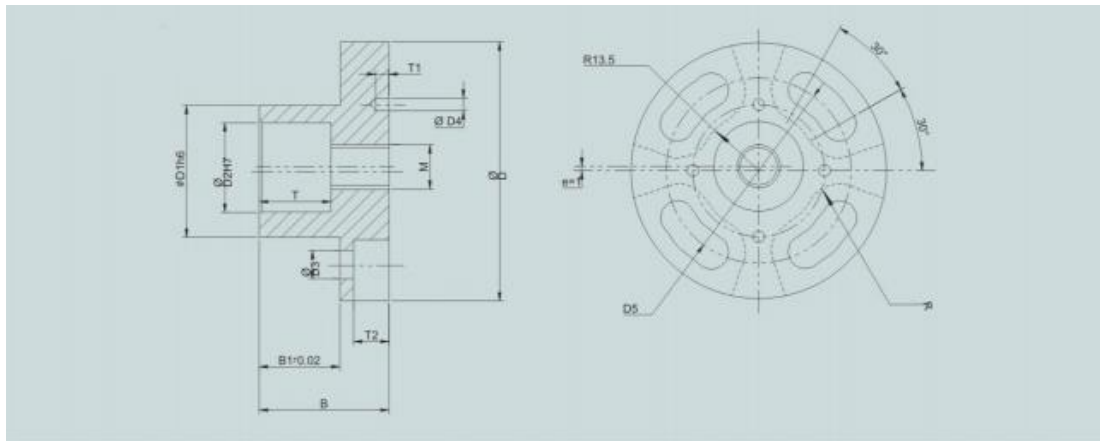
Code	L	E	Module	Pitch	Precision grade	Material
PDGR350101	1200	1100	3.1831	10.0	DIN6	SCM440
PDGR351101	1100	1000	3.1831	10.0	DIN6	SCM440
PDGR351201	1000	900	3.1831	10.0	DIN6	SCM440

Drive pinion

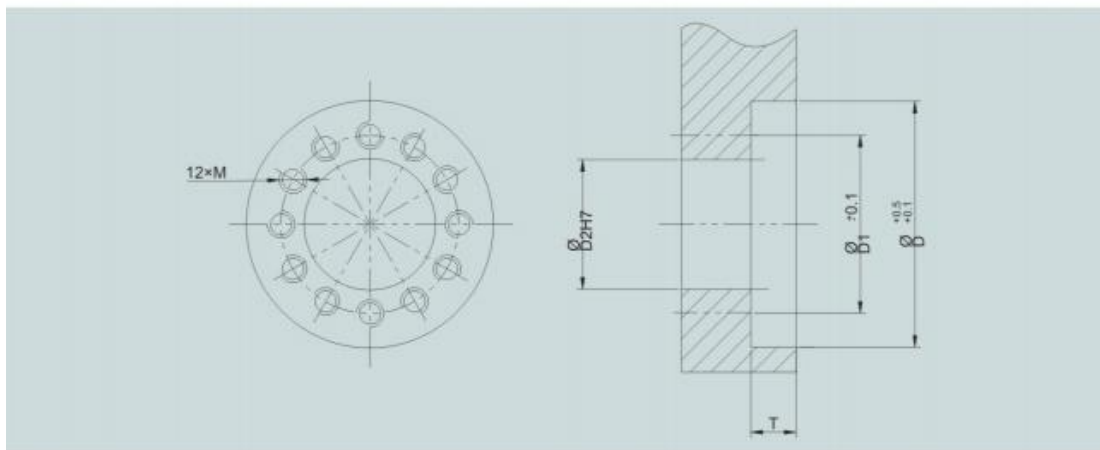


Code	Z	Module	P	Fig.	Precision grade	Max drive force
CSDL35	20	3.1831	10.0	1	DIN6	18.5KN
CSEL35	20	3.1831	10.0	2	DIN6	18.5KN

(17) Eccentric Mounting Flange



Code	B	B1	D	D1	D2 <sup>Ⓢ</sup>	D3	D4	D5	M <sup>Ⓢ</sup>	R	T	T1	T2
FPL15	24.0	14.5	49.0	26.0	15.0	5.3	2.6	36.0	8.0	6.5	12.5	3.0	6.3
FPL20	29.0	18.0	58.0	30.0	20.0	6.4	2.6	42.0	10.0	7.5	16.0	3.0	7.9
FPL25	34.0	20.5	72.0	38.0	25.0	8.4	4.1	52.0	12.0	9.0	21.0	4.5	9.9
FPL35	39.0	22.0	98.0	59.0	40.0	10.5	4.1	75.0	16.0	12.0	26.0	4.5	12.3



Code	D	D1	D2	T	M
FPL15	49	36	26	9.5	5
FPL20	58	42	30	11	6
FPL25	72	52	38	13.5	8
FPL35	98	75	59	17	10